



Gas Production & Depletion And Coal Production

January 2019



Gas Reserve & Production at a glance

Gas Initially in Place (GIIP)	:	35,796.19 Bcf
Recoverable (2P)	:	28,685.40 Bcf
Cumulative Production as of January 2019	:	16,542.39 Bcf
Remaining Reserve up to January 2019	:	12,143.01 Bcf
Gas Production in January 2019	:	83.29 Bcf
National Oil Company (NOC's) production in January 2019	:	32.76 Bcf
International Oil Company (IOC's) production in January 2019	:	50.53 Bcf
No. of National Oil Company (NOC's) in January 2019	:	3 (BGFCL, BAPEX, SGFL)
No. of International Oil Company (IOC's) in January 2019	:	2 (Chevron, Tullow)
Total gas fields of National Oil Company(NOC) in January 2019	:	21
Total gas fields of International Oil Company(IOC) in January 2019	:	5
Total gas wells of National Oil Company(NOC) in January 2019	:	116
Total gas wells of International Oil Company(IOC) in January 2019	:	60
No. of National Oil Company (NOC's) gas production well in January 2019	:	66
No. of International Oil Company (IOC's) gas production well in January 2019	:	44
No. of National Oil company(NOC's) suspended well in January 2019	:	50
No. of International Oil company(IOC's) suspended well in January 2019	:	16

Executive Summary of January 2019

Total gas and condensate Production in January 2019 were 83.29 Bcf and 370,345 Bbl. In the previous month i.e. December 2018, gas and condensate production was 80.66 Bcf and 345,837 Bbl and in the same month of the previous year i.e. January 2018, total gas and condensate production was 79.54 Bcf and 375,875 Bbl respectively. The National Oil Companies (NOC's) and International Oil Companies (IOC's) Produced 32.76 Bcf and 50.53 Bcf gas respectively in January 2019. During the previous month i.e. December 2018 gas production by the National Oil Companies (NOC's) and International Oil Companies (IOC's) were 32.98 Bcf and 47.70 Bcf respectively. In the month of January 2019 Bibiyana gas field Produced 34.96 Bcf gas and it ranked top among the gas producers. It is noted that Bibiyana gas field Produced 37.29 Bcf in December 2018. Average production from the field during the month of January 2019 was 1128 Mmcfd.

During the month of January 2019 total production of condensate was 370,345 Bbl compared to 345,601 Bbl in the previous month i.e. December 2018. Bibiyana gas field Produced 287,672 Bbl condensate and ranked top while Jalalabad ranked 2nd by producing 35,294 Bbl.

The month of January 2019 total coal production was 21,896.47 Ton. In the previous month i.e. December 2018 total coal production was 92,352.74 Ton. It indicates that 70,456.27 Ton more Coal was produced compared to previous month.

Table of Contents

Gas Report	Page No.
Summary	1
summary of Reserve and Production	2
Production comparison between December 2018 & January 2019	3
Probable Yearwise Production of GAS	4
Probable Year wise Remaining GAS	5
Production per well & production reserve ratio	6
Monthly Production by Fields & Wells up to January 2019	7-14
Monthly Condensate Production by Fields up to January 2019	15-16
Monthly Water Production by Fields from January 2019	17-18
Conditions of Field and Well up to January 2019	19-23
Chart	
Well-wise Production of All fields in 2017-18	24
Reserve, Production and Remaining Reserve as of January 2019	25
Daily Average Gas Production from January 2012 to January 2019	26
Field wise Daily Average Production as of January 2019	27
Well wise Daily Average Production-BGFCL as of January 2019	28
Well wise Daily Average Production-BAPEX and SGFL, January 2019	29
Well wise Daily Average Production-IOC and JVA, January 2019	30
Comparison of Field wise Daily Average Gas Production between Dec 18 & Jan 19	31
Daily Average Production by Operator, January 2019	32
Comparison of Operator wise daily average Production between December 18 & January 19	33
Daily Average Production – National vs IOC's, January 2019	34
Comparison of daily avg Gas Production- National vs IOC's between December 18 & January 19	35
Daily Average Production IOC's and JVA, January 2019	36
Monthly Condensate Production, January 2019	37
Coal Report	
Summary	38-39
Barapukuria Coal Mine-MPM and P Contract (BCMCL)	40
Barapukuria Coal Mine Day wise Data Graph for January 2019	41

Summary of Reserve and Production As of 31 January 2019

Gas Initially Place (Proven + Probable)	35,796.19 Bcf	35.80 Tcf
Recoverable (Proven + Probable)	28,685.40 Bcf	28.69 Tcf
Gas Production in January 2019	83.29 Bcf	0.08 Tcf
Cumulative Production as of January 2019	16542.39 Bcf	16.54 Tcf
Remaining Reserve	12,143.01 Bcf	12.14 Tcf

NOTE: Reserve figure based on "Updated Report on Bangladesh Gas Reserve Estimation 2010", prepared by Gustavson Associates LLC, USA

Summary of Reserve and Production

(As of January 2019)

Gas Bcf



SI No.	Field	2P	GIIP	2P Reserve	Gas Prod. In January '18	Cum. Gas Production	Remaining Reserve	Cum. Condensate Production
1	Begumganj		47.0	33.0	0.2	1.6	31.4	0
2	Shahbazpur		415.0	261.0	1.4	59.2	201.8	6
3	Semutang		654.0	318.0	0.0	13.0	305.0	5
4	Fenchuganj		483.0	329.0	0.3	158.4	170.6	115
5	Salda Nadi		393.0	275.0	0.1	91.2	183.8	58
6	Srikail*		230.0	161.0	1.1	82.3	78.7	131
7	Sundalpur *		62.2	50.2	0.2	12.2	38.0	0
8	Rupganj		48.0	33.6	0.0	0.7	32.9	1
Bapex			2,332.2	1,460.8	3.4	418.7	1,042.1	318
9	Meghna		122.0	101.0	0.4	69.3	31.7	108
10	Narshingdi		405.0	345.0	0.8	200.8	144.2	419
11	Kamta		72.0	50.0	0.0	21.1	28.9	4
12	Habiganj		3,981.0	2,787.0	6.8	2,435.5	351.5	131
13	Bakhrabad		1,825.0	1,387.0	0.9	813.0	574.0	1,020
14	Titas		9,039.0	7,582.0	15.8	4,667.6	2,914.4	5,237
BGFCL			15,444.0	12,252.0	24.7	8,207.4	4,044.6	6,919
15	Sangu		976.0	771.0	0.0	489.5	281.5	37
Santos/Cairn			976.0	771.0	0.0	489.5	281.5	37
16	Bibiyana		5,321.0	4,532.0	40.0	3,633.8	898.2	21,441
17	Moulavi Bazar		630.0	494.0	0.7	323.0	171.0	117
18	Jalalabad**		1,346.0	1,346.0	7.5	1,285.0	61.0	10,169
Chevron			7,297.0	6,372.0	48.2	5,241.8	1,130.2	31,727
19	Feni		185.0	130.0	0.0	63.0	67.0	110
Niko			185.0	129.6		63.0	66.6	110
20	Kailas Tila		3,463.0	2,880.0	2.0	728.7	2,151.3	7,812
21	Sylhet		580.0	408.0	0.1	214.4	193.6	797
22	Rashidpur		3,887.0	3,134.0	1.6	629.2	2,504.8	777
23	Chattak		677.0	474.0	0.0	25.8	448.2	4
24	Beani Bazar		225.0	137.0	0.3	95.5	41.5	1,571
SGFL			8,832.0	7,033.0	4.0	1,693.7	5,339.3	10,961
25	Bangura		730.0	621.0	3.0	428.3	192.7	1,075
Tullow			730.0	621.0	3.0	428.3	192.7	1,075
26	Kutubdia		65.0	46.0	0.0	0.0	46.0	0
Total			35,796.2	28,685.4	83.29	16,542.4	12,143.0	51,147

* Preliminary reserve estimated by BAPEX

** 2P reserve estimation by Petrobangla has crossed the limit. So 2P reserve is estimated as GIIP reserve now.

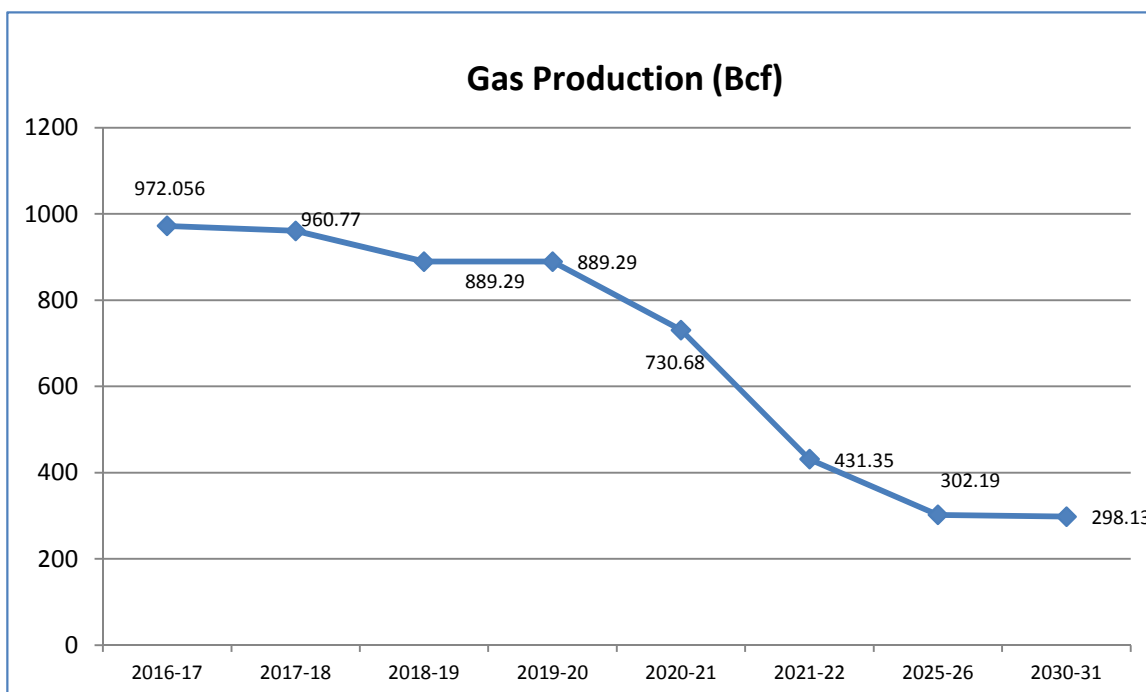
Production comparison between December'18 & January'19



SI No.	Field	Gas Prod. (MMcf) in December '18	Daily Avg. (MMcfd) in December'18	Gas Prod. (MMcf) in January'19	Daily Avg. (MMcfd) in January'19
1	Begumganj	174	6	176	6
2	Shahbazpur	1536	50	1424	46
3	Semutang	20	1	22	1
4	Fenchuganj	342	11	334	11
5	Salda Nadi	133	4	127	4
6	Srikail	1076	35	1076	35
7	Sundalpur	206	7	220	7
8	Rupganj	0	0	0	0
Bapex		3487	112	3379	109
9	Meghna	373	12	372	12
10	Narshingdi	821	26	844	27
11	Kamta	0	0	0	0
12	Habiganj	6927	223	6776	219
13	Bakhrabad	852	27	852	27
14	Titas	15700	506	15838	511
BGFCL		24672	796	24682	796
15	Sangu	0	0	0	0
Santos/Cairn		0	0	0	0
16	Bibiyana	37285	1203	40006	1291
17	Moulavi Bazar	718	23	682	22
18	Jalalabad	7382	238	7482	241
Chevron		45385	1464	48171	1554
19	Feni	0	0	0	0
Niko		0	0	0	0
20	Kailas Tila	2081	67	2017	65
21	Sylhet	137	4	131	4
22	Rashidpur	1586	51	1597	52
23	Chattak	0	0	0	0
24	Beani Bazar	277	9	274	9
SGFL		4081	132	4018	130
25	Bangura	3037	98	3044	98
Tullow		3037	98	3044	98
26	Kutubdia	0	0	0	0
		0	0	0	0
Total		80662	2602	83294	2687

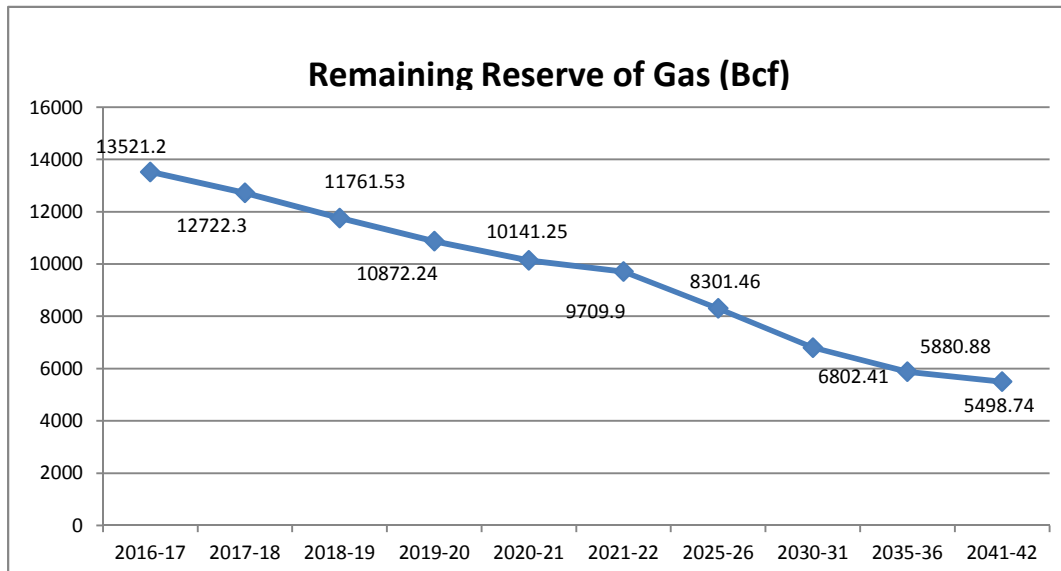
Probable Yearwise Production of GAS

	Total 2P Reserve	Cumulative Production	production									
			2016-17	2017-18	2018-19	2019-20	2020-21	2021-22	2025-26	2030-31	2035-36	2041-42
Titas	7582	4556.6	191.13	195.42	195.42	195.42	195.42	195.42	195.42	195.42	0	0
Habiganj	2787	2386.8	81.17	79.9	79.9	79.9	79.9	79.9				
kamta	50	21.1	0	0		0	0	0	0	0	0	0
Bakhrabad	1387	806.9	14.26	12.02	12.02	12.02	12.02	12.02	12.02	12.02	12.02	12.02
Narshingdi	345	195	10.32	10.02	10.02	10.02	10.02	10.02	10.02	10.02		
Meghna	101	66.7	4.43	4.62	4.62	4.62	4.62	4.62	1.96			
Feni	130	63	0	0	0	0	0	0	0	0	0	0
Kailas Tila	2880	715	23.72	22.96	22.96	22.96	22.96	22.96	22.96	22.96	22.96	22.96
Sylhet	408	213.5	2.8	1.79	1.79	1.79	1.79	1.79	1.79	1.79	1.79	1.79
Rashidpur	3134	618.1	20.61	19.51	19.51	19.51	19.51	19.51	19.51	19.51	19.51	19.51
Chattak	474	25.8	0	0	0							
Beani Bazar	137	93.6	4.19	3.5	3.5	3.5	3.5	3.5	3.5	1.4		
Shahbazzpur	261	47.5	9.78	15.26	15.26	15.26	15.26	15.26	15.26	15.26		
Semutang	318	12.9	0.78	0.46	0.46	0.46	0.46	0.46	0.46	0.46	0.46	0.46
Fenchuganj	329	156.1	8.77	4.7	4.7	4.7	4.7	4.7	4.7	4.7	4.7	4.7
Saldanadi	275	90.3	1.89	1.06	1.06	1.06	1.06	1.06	1.06	1.06	1.06	1.06
Sundalpur	50.2	10.7	0	0.94	0.94	0.94	0.94	0.94	0.94	0.94	0.94	0.94
Srikail	161	75.1	14.99	12.93	12.93	12.93	12.93	12.93	0			
Jalalabad	1346	1233.3	96.81	92.09	20.61	20.61						
Moulavi Baz	494	317.3	13.71	12.34	12.34	12.34	12.34	12.34	12.34	12.34		
Bibiyana	4532	3357.7	437.17	437.33	437.33	437.33	299.33					
Bangura	621	409.4	35.09	33.67	33.67	33.67	33.67	33.67				
Sangu	771	489.5	0	0	0	0	0	0				
Begumganj	33	0.9	0.006	0	0	0	0	0				
Rupganj	33.6	0.7	0.43	0.25	0.25	0.25	0.25	0.25	0.25	0.25	0.25	0.25
Kutubdia	46	0	0	0	0							
	28685.8	15963.5	972.056	960.77	889.29	889.29	730.68	431.35	302.19	298.13	63.69	63.69



Probable Year wise Remaining GAS

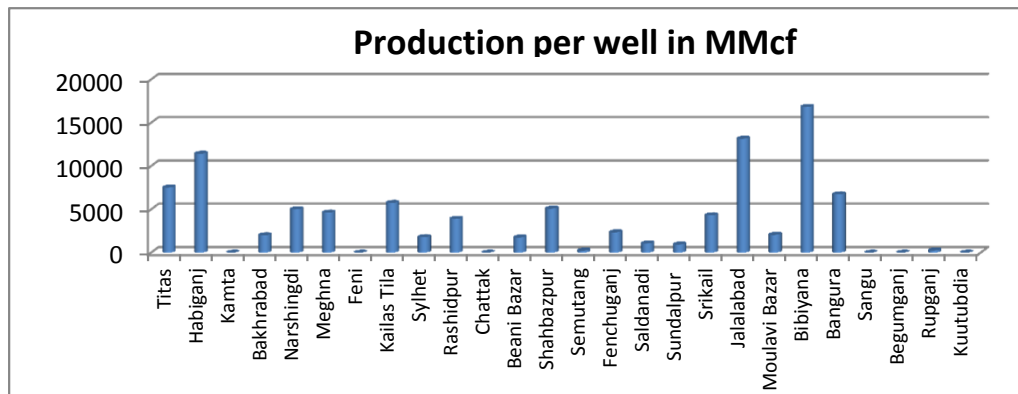
	Total 2p Reserve	Cumulative production	Remaining									
			2016-17	2017-18	2018-19	2019-20	2020-21	2021-22	2025-26	2030-31	2035-36	2041-42
Titas	7582	4556.6	3220.8	3025.4	2829.98	2634.56	2439.14	2243.72	1462.04	484.94	0	0
Habiganj	2787	2386.8	480.1	400.2	320.3	240.4	160.5	80.6			0	0
kamta	50	21.1	28.9	28.9	28.9	28.9	28.9	28.9	28.9	28.9	28.9	28.9
Bakhrabad	1387	806.9	592.1	580.1	568.08	556.06	544.04	532.02	483.94	423.84	363.74	291.62
Narshingdi	345	195	160	150	139.98	129.96	119.94	109.92	69.84	19.74	0	0
Meghna	101	66.7	38.9	34.3	29.68	25.06	20.44	15.82	0	0	0	0
Feni	130	63	67	67	67	67	67	67	67	67	0	0
Kailas Tila	2880	715	2188	2165	2142.04	2119.08	2096.12	2073.16	1981.32	1866.52	1751.72	1613.96
Sylhet	408	213.5	196.3	194.5	192.71	190.92	189.13	187.34	180.18	171.23	162.28	151.54
Rashidpur	3134	618.1	2535.4	2515.9	2496.39	2476.88	2457.37	2437.86	2359.82	2262.27	2164.72	2047.66
Chattak	474	25.8	448.2	448.2	448.2	448.2	448.2	448.2	448.2	448.2	448.2	448.2
Beani Bazar	137	93.6	46.9	43.4	39.9	36.4	32.9	29.4	15.4	0	0	0
Shahbazpur	261	47.5	228.8	213.5	198.24	182.98	167.72	152.46	91.42	15.12	0	0
Semutang	318	12.9	305.6	305.1	304.64	304.18	303.72	303.26	301.42	299.12	296.82	294.06
Fenchuganj	329	156.1	177.6	172.9	168.2	163.5	158.8	154.1	135.3	111.8	88.3	60.1
Saldanadi	275	90.3	185.7	184.7	183.64	182.58	181.52	180.46	176.22	170.92	165.62	159.26
Sundalpur	50.2	10.7	40.4	39.5	38.56	37.62	36.68	35.74	31.98	27.28	22.58	16.94
Srikail	161	75.1	98.9	85.9	72.97	60.04	47.11	34.18	0	0	0	0
Jalalabad	1346	1233.3	42.8	112.7	20.61	0	0	0	0	0	0	0
Moulavi Baz	494	317.3	189.1	176.7	164.36	152.02	139.68	127.34	77.98	16.28	0	0
Bibiyana	4532	3357.7	1611.7	1174.3	736.97	299.64	0	0	0	0	0	0
Bangura	621	409.4	245.2	211.6	177.93	144.26	110.59	76.92	0	0	0	0
Sangu	771	489.5	281.5	281.5	281.5	281.5	281.5	281.5	281.5	281.5	281.5	281.5
Begumganj	33	0.9	32.1	32.1	32.1	32.1	32.1	32.1	32.1	32.1	32.1	32.1
Rupganj	33.6	0.7	33.2	32.9	32.65	32.4	32.15	31.9	30.9	29.65	28.4	26.9
Kutubdia	46	0	46	46	46	46	46	46	46	46	46	46
Total	28685.8	15963.5	13521.2	12722.3	11761.5	10872.2	10141.3	9709.9	8301.46	6802.41	5880.88	5498.74



Production per well & production reserve ratio



	No of well	Total 2p- Recoverable	2017-18 production	production per well mmcf	production reserve ratio
Titas	26	7582	195.42	7516.15	0.026
Habiganj	7	2787	79.9	11414.29	0.029
Kamta	0	50	0	0.00	0.000
Bakhrabad	6	1387	12.02	2003.33	0.009
Narshingdi	2	345	10.02	5010.00	0.029
Meghna	1	101	4.62	4620.00	0.046
Feni	0	130	0	0.00	0.000
Kailas Tila	4	2880	22.96	5740.00	0.008
Sylhet	1	408	1.79	1790.00	0.004
Rashidpur	5	3134	19.51	3902.00	0.006
Chattak	0	474	0	0.00	0.000
Beani Bazar	2	137	3.5	1750.00	0.026
Shahbazpur	3	261	15.26	5086.67	0.058
Semutang	2	318	0.46	230.00	0.001
Fenchuganj	2	329	4.7	2350.00	0.014
Saldanadi	1	275	1.06	1060.00	0.004
Sundalpur	1	50.2	0.94	940.00	0.019
Srikail	3	161	12.93	4310.00	0.080
Jalalabad	7	1346	92.09	13155.71	0.068
Moulavi Bazar	6	494	12.34	2056.67	0.025
Bibiyana	26	4532	437.33	16820.38	0.096
Bangura	5	621	33.67	6734.00	0.054
Sangu	0	771	0	0.00	0.000
Begumganj	0	33	0	0.00	0.000
Rupganj	1	33.6	0.25	250.00	0.007
Kuutubdia	0	46	0	0.00	0.000
Total	111	28685.8	960.77	8655.59	0.033



Monthly Production by Field and Well upto January- 2019



HYDROCARBON UNIT

Energy & Mineral Resources Division

Figures in mmscf

Well	Jan	Feb	Mar	Apr	May	Jun	Jul	Aug	Sep	Oct	Nov	Dec	Total	Cumulative	2018	2017	2016
Field : Bakharabad																	
BKB-1	0												0	141,167	0	0	0
BKB-2	34												34	86,605	445	543	731
BKB-3	154												154	160,999	1,989	2,249	2,223
BKB-4	0													55,872			
BKB-5	155												155	58,967	1,822	1,847	1,814
BKB-6	0												0	50,069	0		
BKB-7	0												0	107,750	0	0	0
BKB-8	158												158	126,419	2,017	3,462	4,142
BKB-9	251												251	21,374	3,332	3,637	4,160
BKB-10	98												98	3,772	1,297	1,453	924
Field Total:	852	0	0	0	0	0	0	0	0	0	0	0	852	812,993	10,903	13,190	13,070
Daily Avg.(mmscfd)	27	0	0	0	0	0	0	0	0	0	0	0	27		30	36	36
Field : Bangura																	
Bangura-1	384												384	89,638	4,615	4,914	4,886
Bangura-2	504												504	80,042	6,802	7,837	9,200
Bangura-3	601												601	97,328	7,265	8,662	10,038
Bangura-6	343												343	9,290	4,847	4,100	
Bangura-5	1,212												1,212	151,955	8,410	9,699	11,514
Field Total:	3,044	0	0	0	0	0	0	0	0	0	0	0	3,044	428,252	31,940	35,212	35,639
Daily Avg.(mmscfd)	98	0	0	0	0	0	0	0	0	0	0	0	98		88	96	98
Field : Beani Bazar																	
BB-1	0												0	35,481	0	1,023	33
BB-2	274												274	60,011	3,276	3,282	3,431
Field Total:	274	0	0	0	0	0	0	0	0	0	0	0	274	95,491	3,276	4,306	3,464
Daily Avg.(mmscfd)	9	0	0	0	0	0	0	0	0	0	0	0	9		9	12	9
Field : Bibiyana																	
BY-1	2,554												2,554	370,438	21,743	35,595	35,050
BY-2	1,632												1,632	276,059	21,388	23,957	20
BY-3	737												737	236,006	6,249	9,904	16,873
BY-4	1,865												1,865	182,403	28,559	6,571	7,322
BY-5	762												762	172,729	6,131	8,117	9,229
BY-6	792												792	222,287	11,057	11,879	15,208
BY-7	2,548												2,548	247,131	23,155	32,874	33,040
BY-8	768												768	135,011	8,921	12,486	2,987
BY-9	553												553	125,170	4,093	6,247	6,820

Monthly Production by Field and Well upto January- 2019



HYDROCARBON UNIT

Energy & Mineral Resources Division

Figures in mmscf

Well	Jan	Feb	Mar	Apr	May	Jun	Jul	Aug	Sep	Oct	Nov	Dec	Total	Cumulative	2018	2017	2016		
BY-10	2,106												2,106	337,103	30,954	32,967	33,582		
BY-11	797												797	120,758	12,147	6,813	9,357		
BY-12	2,162												2,162	124,866	6,835	8,284	10,574		
BY-13	959												959	73,918	13,171	11,842	15,603		
BY-14	800												800	91,413	11,523	15,354	15,170		
BY-15	1,829												1,829	98,750	24,295	19,111	17,698		
BY-16	908												908	61,980	9,264	12,541	15,844		
BY-17	1,794												1,794	79,665	17,603	15,412	15,463		
BY-18	2,784												2,784	120,586	31,890	29,509	33,072		
BY-19	1,761												1,761	33,839	8,144	9,859	9,383		
BY-20	1,636												1,636	39,482	7,840	6,533	9,282		
BY-21	634												634	35,858	9,670	13,246	8,533		
BY-22	1,742												1,742	109,541	24,755	27,093	33,387		
BY-23	2,261												2,261	54,308	32,043	15,333	4,405		
BY-24	870												870	59,034	13,268	13,484	15,265		
BY-25	2,070												2,070	107,250	28,306	30,331	33,282		
BY-26	2,683												2,683	118,249	33,853	30,446	33,167		
Field Total:	40006	0	0	0	0	0	0	0	0	0	0	0	40,006	3,633,835	446,855	445,787	439,615		
Daily Avg.(mmscfd)	1291	0	0	0	0	0	0	0	0	0	0	0	1,291		1,224	1,221	1,204		
Field :	Chattak																		
Ch-1	Production Suspended													25,834					
Field Total:													0	0	25,834				
Daily Avg.(mmscfd)													0	0	0	0			
Field :	Fenchuganj																		
Fenchuganj-2	0												0	38,169	0	0	0		
Fenchuganj-3	274												274	90,912	3,186	6,192	7,606		
Fenchuganj-4	60												60	29,334	809	441	3,189		
Field Total:	334	0	0	0	0	0	0	0	0	0	0	0	334	158,414	3,994	6,633	10,795		
Daily Avg.(mmscfd)	11	0	0	0	0	0	0	0	0	0	0	0	11		11	18	30		
Field :	Feni																		
Feni-1	Production Suspended									0	0		34,214						
Feni-2	Production Suspended									0	0		6,119						
Feni-3	Production Suspended									0	0		2,176						

Monthly Production by Field and Well upto January- 2019



HYDROCARBON UNIT
Energy & Mineral Resources Division

Figures in mmscf

Well	Jan	Feb	Mar	Apr	May	Jun	Jul	Aug	Sep	Oct	Nov	Dec	Total	Cumulative	2018	2017	2016				
Feni-4	Production Suspended								0									14,386			
Feni-5	Production Suspended								0									6,127			
Field Total:													63,023								
Daily Avg.(mmscfd)																					
Field :	Habiganj																				
Hbj-1	429												429	278,537	2,207	0	0				
Hbj-2	0												0	275,704	0	0	0				
Hbj-3	1,105												1,105	378,263	13,155	13,151	13,227				
Hbj-4	1,105												1,105	372,721	13,155	13,151	13,227				
Hbj-5	798												798	298,472	9,497	9,497	9,552				
Hbj-6	461												461	162,670	5,487	5,491	5,523				
Hbj-7	1,211												1,211	254,330	14,533	14,565	14,685				
Hbj-8	0												0	11,023	0	0	0				
Hbj-9	0												0	52,652	0	0	0				
Hbj-10	969												969	254,102	13,928	14,058	14,629				
Hbj-11	697												697	97,005	9,579	10,398	11,247				
Field Total:	6,776	0	0	0	0	0	0	0	0	0	0	0	6,776	2,435,477	81,540	80,313	82,091				
Daily Avg.(mmscfd)	219	0	0	0	0	0	0	0	0	0	0	0	219		223	220	225				
Field :	Jalalabad																				
JB-1	877												877	246,646	10,469	9,142	11,951				
JB-2	1,088												1,088	280,684	12,973	14,517	17,057				
JB-3	1,451												1,451	341,975	17,399	19,162	21,086				
JB-4	453												453	279,454	5,821	7,045	8,313				
JB-6	1,451												1,451	60,776	17,364	19,524	19,136				
JB-7	1,088												1,088	30,478	13,053	10,324	5,254				
JB-8	1,073												1,073	45,003	12,793	14,513	16,252				
Field Total:	7,482	0	0	0	0	0	0	0	0	0	0	0	7,482	1,285,017	89,872	94,226	99,048				
Daily Avg.(mmscfd)	241	0	0	0	0	0	0	0	0	0	0	0	241		246	258	271				
Field :	Kailas Tila																				
KTL-1	147												147	204,957	462	0	0				

Monthly Production by Field and Well upto January- 2019



HYDROCARBON UNIT
Energy & Mineral Resources Division

Figures in mmscf

Well	Jan	Feb	Mar	Apr	May	Jun	Jul	Aug	Sep	Oct	Nov	Dec	Total	Cumulative	2018	2017	2016
KTL-2	612												612	178,758	7,190	7,242	7,282
KTL-3	235												235	138,054	2,947	3,255	5,003
KTL-4	253												253	96,349	3,336	3,680	3,499
KTL-5	0												0	17,923	0	0	0
KTL-6	770												770	91,858	8,950	9,086	8,975
KTL-7	0												0	816	0	0	329
Field Total:	2,017	0	0	0	0	0	0	0	0	0	0	0	2,017	728,715	22,886	23,263	25,088
Daily Avg.(mmscfd)	65	0	0	0	0	0	0	0	0	0	0	0	65		63	64	69
Field :	Kamta																
Kamta-1	Production Suspended													21,139			
Field Total:														21,139			
Daily Avg.(mmscfd)																	
Field :	Meghna																
M-1	372												372	69,346	4,538	4,625	4,425
Field Total:	372	0	0	0	0	0	0	0	0	0	0	0	372	69,346	4,538	4,625	4,425
Daily Avg.(mmscfd)	12	0	0	0	0	0	0	0	0	0	0	0	12		12	13	12
Field :	Moulavi Bazar																
MV Bazar-2	121												121	54,159	2,302	2,866	3,201
MV Bazar-3	207												207	158,016	3,712	4,705	5,394
MV Bazar-4	159												159	58,226	3,103	3,945	4,141
MV Bazar-5	0													66			
MV Bazar-6	193												193	16,542	1,734	1,676	1,737
MV Bazar-7	1												1	5,645	21	152	123
MV Bazar-9	0												0	30,335	1	0	41
Field Total:	682	0	0	0	0	0	0	0	0	0	0	0	682	322,990	10,872	13,345	14,638
Daily Avg.(mmscfd)	22	0	0	0	0	0	0	0	0	0	0	0	22		30	37	40
Field :	Narshingdi																
N-1	530												530	145,124	6,181	6,279	6,242
N-2	314												314	55,684	3,705	3,962	4,122

Monthly Production by Field and Well upto January- 2019



HYDROCARBON UNIT
Energy & Mineral Resources Division

Figures in mmscf

Well	Jan	Feb	Mar	Apr	May	Jun	Jul	Aug	Sep	Oct	Nov	Dec	Total	Cumulative	2018	2017	2016
Field Total:	844	0	0	0	0	0	0	0	0	0	0	0	844	200,808	9,886	10,241	10,364
Daily Avg.(mmscfd)	27	0	0	0	0	0	0	0	0	0	0	0	27		27	28	28
Field : Rashidpur																	
RP-1	542												542	167,605	6,505	6,625	6,639
RP-2	0												0	82,474			
RP-3	300												300	131,508	3,541	3,730	3,877
RP-4	267												267	128,163	3,227	3,516	3,675
RP-5	0												0	25,647			
RP-6	0												0	9,983	0	0	0
RP-7	173												173	64,499	2,096	2,225	2,355
RP-8	314												314	19,347	3,696	3,977	4,422
Field Total:	1,597	0	0	0	0	0	0	0	0	0	0	0	1,597	629,225	19,065	20,074	20,969
Daily Avg.(mmscfd)	52	0	0	0	0	0	0	0	0	0	0	0	52		52	55	57
Field : Salda Nadi																	
Salda-1	0												0	36,904	0	0	0
Salda-2	0												0	28,495	0	0	0
Salda-3	123												123	25,704	1,067	1,514	2,350
Salda-4	4												4	121	70	14	34
Field Total:	127	0	0	0	0	0	0	0	0	0	0	0	127	91,224	1,137	1,527	2,383
Daily Avg.(mmscfd)	4	0	0	0	0	0	0	0	0	0	0	0	4		3	4	7
Field : Sangu																	
Sangu-1	0	0	0	0	0	0	0	0	0	0	0	0	0	116,191	0	0	0
Sangu-3z	0	0	0	0	0	0	0	0	0	0	0	0	0	131,796	0	0	0
Sangu-4	Production Suspended						0	0	0	0	0	0	0	87,280			
Sangu-5	Production Suspended						0	0	0	0	0	0	0	61,674			
Sangu-7	Production Suspended						0	0	0	0	0	0	0	18,202			
Sangu-8	Production Suspended						0	0	0	0	0	0	0	37,619			
Sangu-9	0	0	0	0	0	0	0	0	0	0	0	0	0	30,638	0	0	0
Sangu-10	Production Suspended						0	0	0	0	0	0	0				
Sangu-11	0	0	0	0	0	0	0	0	0	0	0	0	0	6,067	0	0	0

Monthly Production by Field and Well upto January- 2019



HYDROCARBON UNIT
Energy & Mineral Resources Division

Figures in mmscf

Well	Jan	Feb	Mar	Apr	May	Jun	Jul	Aug	Sep	Oct	Nov	Dec	Total	Cumulative	2018	2017	2016
Field Total:	0	0	0	0	0	0	0	0	0	0	0	0	0	489,467	0	0	0
Daily Avg.(mmscfd)	0	0	0	0	0	0	0	0	0	0	0	0	0		0	0	0
Field :	Semutang																
Semutang-5	14												14	12,080	291	471	946
Semutang-6	7												7	963	84	66	0
Field Total:	22	0	0	0	0	0	0	0	0	0	0	0	22	13,043	375	537	946
Daily Avg.(mmscfd)	1	0	0	0	0	0	0	0	0	0	0	0	1		1	1	3
Field :	Shahbazpur																
Shahbazpur-1	0												0	21,358	134	4,835	3,623
Shahbazpur-2	534												534	11,616	6,650	4,243	189
Shahbazpur-3	377												377	12,703	5,222	1,162	3,116
Shahbazpur-4	513												513	13,516	6,936	1,801	1,091
Field Total:	1,424	0	0	0	0	0	0	0	0	0	0	0	1,424	59,193	18,943	12,041	8,019
Daily Avg.(mmscfd)	46	0	0	0	0	0	0	0	0	0	0	0	46		52	33	22
Field	Srikail																
Srikail-2	442												442	38,386	5,154	5,384	6,064
Srikail-3	358												358	35,189	4,273	4,944	6,607
Srikail-4	276												276	8,721	2,971	3,439	2,035
Field Total:	1,076	0	0	0	0	0	0	0	0	0	0	0	1,076	82,297	12,398	13,767	14,707
Daily Avg.(mmscfd)	35	0	0	0	0	0	0	0	0	0	0	0	35		34	38	40
Field :	Sundalpur																
Sundalpur -1	0												0	9,809	0	0	552
Sundalpur -2	220												220	2,396	2,176	0	0
Field Total:	220	0	0	0	0	0	0	0	0	0	0	0	220	12,205	2,176	0	552
Daily Avg.(mmscfd)	7	0	0	0	0	0	0	0	0	0	0	0	7		6	0	2
Field :	Sylhet																
Sylhet-3	Production Suspended												89,032				
Sylhet-6	Production Suspended												91,748				

Monthly Production by Field and Well upto January- 2019



HYDROCARBON UNIT
Energy & Mineral Resources Division

Figures in mmscf

Well	Jan	Feb	Mar	Apr	May	Jun	Jul	Aug	Sep	Oct	Nov	Dec	Total	Cumulative	2018	2017	2016
Sylhet-7	131												131	27,121	1,622	2,061	2,212
Surma-1	0												0	6,528	0	249	720
Field Total:	131	0	0	0	0	0	0	0	0	0	0	0	131	214,429	1,622	2,309	2,932
Daily Avg.(mmscfd)	4	0	0	0	0	0	0	0	0	0	0	0	4		4	6	8
Field :	Titas																
Titas-1	675												675	440,304	8,516	7,897	9,999
Titas-2	962												962	436,467	11,522	11,506	11,474
Titas-3	0			0	0	0	0	0	0	0	0	0	0	314,888	0		
Titas-4	994												994	371,445	11,726	11,798	12,782
Titas-5	1,020												1,020	429,272	11,838	11,869	10,692
Titas-6	978												978	364,106	12,030	12,029	12,809
Titas-7	947												947	345,812	11,919	11,707	12,125
Titas-8	510												510	273,146	6,154	6,889	7,046
Titas-9	539												539	277,028	6,706	8,246	8,467
Titas-10	647												647	199,648	7,612	7,431	4,350
Titas-11	855												855	247,756	9,998	10,276	9,075
Titas-12	482												482	101,257	5,160	5,168	5,326
Titas-13	580												580	190,672	6,952	7,879	9,553
Titas-14	576												576	150,561	7,203	8,309	8,888
Titas-15	460												460	139,973	5,543	7,973	11,777
Titas-16	669												669	147,015	8,605	10,060	11,333
Titas-17	515												515	40,018	6,335	7,011	7,359
Titas-18	546												546	38,552	6,664	7,168	7,338
Titas-19	507												507	28,556	6,115	6,106	6,253
Titas-20	305												305	19,133	3,914	3,635	3,645
Titas-21	253												253	9,484	2,995	2,800	1,572
Titas-22	309												309	24,727	4,158	4,336	5,497
Titas-27	487												487	29,326	5,827	6,136	6,233
Titas-23	483												483	10,488	5,594	4,410	
Titas-24	202												202	5,194	2,709	2,283	
Titas-25	528												528	12,743	6,324	5,622	269
Titas-26	809												809	20,075	9,672	9,210	383

Monthly Production by Field and Well upto January- 2019



HYDROCARBON UNIT
Energy & Mineral Resources Division

Figures in mmscf

Well	Jan	Feb	Mar	Apr	May	Jun	Jul	Aug	Sep	Oct	Nov	Dec	Total	Cumulative	2018	2017	2016
Field Total:	15,838	0	0	0	0	0	0	0	0	0	0	0	15,838	4,667,645	191,792	197,756	184,246
Daily Avg.(mmscfd)	511	0	0	0	0	0	0	0	0	0	0	0	511		525	542	505
Field : Begumganj																	
Begumganj-3	176												176	1,646	593	0	85
Field Total:	176	0	0	0	0	0	0	0	0	0	0	0	176	1,646	593	0	85
Daily Avg.(mmscfd)	6	0	0	0	0	0	0	0	0	0	0	0	6		2	0	0
Field : Rupganj																	
Rupganj-1	0												0	679	0	679	
Field Total:	0	0	0	0	0	0	0	0	0	0	0	0	0	679	0	679	
Daily Avg.(mmscfd)	0	0	0	0	0	0	0	0	0	0	0	0	0		0	2	
Grand Total (in Bcf)	83.29	0.00	0.00	0.00	0.00	0.00	0	0.00	0.00	0.00	0.00	0.00	83.3	16,542.4	964.7	979.8	973.1
Daily Avg.(mmscfd)	2,687	0	0	0	0	0	0	0	0	0	0	0	2,687		2,643	2,684	2,666

Monthly Condensate Production by Fields upto January 2019



Field Name	Jan-19	Feb-19	Mar-19	Apr-19	May-19	Jun-19	Jul-19	Aug-19	Sep-19	Oct-19	Nov-19	Dec-19	Total	Cumulative	2018	2017	2016
													000' bbl				
Bakhrabad	475												475	1,020	5,022	6,173	7,091
Daily Avg.	15	0	0	0	0	0	0	0	0	0	0	0	15		14	17	229
Bangura	9,547												9,547	1,075	94,737	103,198	103,416
Daily Avg.	308	0	0	0	0	0	0	0	0	0	0	0	308		260	283	3,336
Beani Bazar	4,207												4,207	1,571	51,187	68,202	56,146
Daily Avg.	136	0	0	0	0	0	0	0	0	0	0	0	136		140	187	1,811
Bibiyana	286,489												286,489	21,441	3,267,318	3,283,757	3,291,906
Daily Avg.	9,242	0	0	0	0	0	0	0	0	0	0	0	9,242		8,952	8,997	106,191
Chattak	0	0	0	0	0	0	0	0	0	0	0	0	0	4	0		
Daily Avg.	0	0	0	0	0	0	0	0	0	0	0	0	0		0		
Fenchuganj	126												126	115	1,625	2,462	6,138
Daily Avg.	4	0	0	0	0	0	0	0	0	0	0	0	4		4	7	198
Feni	0	0	0	0	0	0	0	0	0	0	0	0	0	110	0	0	0
Daily Avg.	0	0	0	0	0	0	0	0	0	0	0	0	0		0	0	0
Habiganj	721												721	131	5,612	3,955	4,143
Daily Avg.	23	0	0	0	0	0	0	0	0	0	0	0	23		15	11	134
Jalalabad	29,901												29,901	10,169	367,160	437,070	528,191
Daily Avg.	965	0	0	0	0	0	0	0	0	0	0	0	965		1,006	1,197	17,038
Kailas Tila	17,562												17,562	7,812	189,620	203,979	223,169
Daily Avg.	567	0	0	0	0	0	0	0	0	0	0	0	567		520	559	7,199
Kamta	Production Suspended										0	0	4				
Daily Avg.											0	0	0	0	0		
Meghna	589												589	108	7,947	7,741	7,735
Daily Avg.	19	0	0	0	0	0	0	0	0	0	0	0	19		22	21	250
Moulavi Bazar	104												104	117	856	1,128	1,585
Daily Avg.	3	0	0	0	0	0	0	0	0	0	0	0	3		2	3	51

Monthly Condensate Production by Fields upto January 2019



Field Name	Jan-19	Feb-19	Mar-19	Apr-19	May-19	Jun-19	Jul-19	Aug-19	Sep-19	Oct-19	Nov-19	Dec-19	Total Cumulative 000' bbl	2018	2017	2016	
Narshingdi	1,285												1,285	419	15,797	16,656	17,534
Daily Avg.	41	0	0	0	0	0	0	0	0	0	0	0	41	43	46	566	
Rashidpur	1,213												1,213	777	14,393	10,723	14,938
Daily Avg.	39	0	0	0	0	0	0	0	0	0	0	0	39	39	29	482	
Saldanadi	19												19	58	137	225	386
Daily Avg.	1	0	0	0	0	0	0	0	0	0	0	0	1	0	1	12	
Sangu	0	0	0	0	0	0	0	0	0	0	0	0	0	37	0	0	0
Daily Avg.	0	0	0	0	0	0	0	0	0	0	0	0	0	0	0	0	0
Semutang	0												0	5	26	99	272
Daily Avg.	0	0	0	0	0	0	0	0	0	0	0	0	0	0	0	0	9
Shahbazpur	187												187	6	2,488	1,791	839
Daily Avg.	6	0	0	0	0	0	0	0	0	0	0	0	6	7	5	27	
Srikail	3,226												3,226	131	33,765	37,879	21,075
Daily Avg.	104	0	0	0	0	0	0	0	0	0	0	0	104	93	104	680	
Sundalpur	10												10	0	121	0	0
Daily Avg.	0	0	0	0	0	0	0	0	0	0	0	0	0	0	0	0	0
Sylhet	969												969	797	10,277	15,593	20,532
Daily Avg.	31	0	0	0	0	0	0	0	0	0	0	0	31	28	43	662	
Titas	13,655												13,655	5,237	159,803	154,262	133,133
Daily Avg.	440	0	0	0	0	0	0	0	0	0	0	0	440	438	423	4,295	
Begumganj	60												60	0	201	0	0
Daily Avg.	2	0	0	0	0	0	0	0	0	0	0	0	2	1	0	0	
Rupganj	0												0	1	0	1,133	
Daily Avg.	0	0	0	0	0	0	0	0	0	0	0	0	0	0	3		
Total (000'bbl)	370	0	0	0	0	0	0	0	0	0	0	0	370	51,147	4,228	4,356	4,438
Daily Avg. (000'bbl)	11.9	0.0	0.0	0.0	0.0	0	0.0	0.0	0.0	0.0	0	0	12	11.6	11.9	12.2	

Note: Historical condensate figure of Sangu available from 2006. Sylhet available from August 1964

Monthly Water Production by Fields in January 2019



Field Name	Jan-19	Feb-19	Mar-19	Apr-19	May-19	Jun-19	Jul-19	Aug-19	Sep-19	Oct-19	Nov-19	Dec-19	Total	2,018	2,017
Bakhrabad	2,117												2,117	28,218	8,419
Daily Avg.	68	0	0	0	0	0	0	0	0	0	0	0	68	77	
Bangura	3,330												3,330	43,917	11,705
Daily Avg.	107	0	0	0	0	0	0	0	0	0	0	0	107	120	
Beani Bazar	9,793												9,793	109,854	24,865
Daily Avg.	316	0	0	0	0	0	0	0	0	0	0	0	316	301	
Bibiyana	16,351												16,351	194,651	47,219
Daily Avg.	527	0	0	0	0	0	0	0	0	0	0	0	527	533	
Chattak	0	0	0	0	0	0	0	0	0	0	0	0	0	0	0
Daily Avg.	0	0	0	0	0	0	0	0	0	0	0	0	0	0	0
Fenchuganj	6,323												6,323	74,969	6,700
Daily Avg.	204	0	0	0	0	0	0	0	0	0	0	0	204	205	
Feni	0	0	0	0	0	0	0	0	0	0	0	0	0	0	0
Daily Avg.	0	0	0	0	0	0	0	0	0	0	0	0	0	0	0
Habiganj	2,532												2,532	39,104	5,197
Daily Avg.	82	0	0	0	0	0	0	0	0	0	0	0	82	107	
Jalalabad	4,717												4,717	55,950	12,915
Daily Avg.	152	0	0	0	0	0	0	0	0	0	0	0	152	153	
Kailas Tila	3,934												3,934	43,233	6,809
Daily Avg.	127	0	0	0	0	0	0	0	0	0	0	0	127	118	
Kamta	0	0	0	0	0	0	0	0	0	0	0	0	0	0	0
Daily Avg.	0	0	0	0	0	0	0	0	0	0	0	0	0	0	0
Meghna	211												211	2,014	551
Daily Avg.	7	0	0	0	0	0	0	0	0	0	0	0	7	6	
Moulavi Baza	1,379												1,379	13,965	754
Daily Avg.	44	0	0	0	0	0	0	0	0	0	0	0	44	38	
Narshingdi	883												883	10,374	2,645
Daily Avg.	28	0	0	0	0	0	0	0	0	0	0	0	28	28	
Rashidpur	13,567												13,567	137,406	30,969
Daily Avg.	438	0	0	0	0	0	0	0	0	0	0	0	438	376	
Saldanadi	129												129	813	387
Daily Avg.	4	0	0	0	0	0	0	0	0	0	0	0	4	2	

Monthly Water Production by Fields in January 2019



Field Name	Jan-19	Feb-19	Mar-19	Apr-19	May-19	Jun-19	Jul-19	Aug-19	Sep-19	Oct-19	Nov-19	Dec-19	Total	2,018	2,017
Sangu	0	0	0	0	0	0	0	0	0	0	0	0	0	0	0
Daily Avg.	0	0	0	0	0	0	0	0	0	0	0	0	0	0	0
Semutang	45												45	3,002	719
Daily Avg.	1	0	0	0	0	0	0	0	0	0	0	0	1	8	
Shahbazpur	1,789												1,789	22,110	3,912
Daily Avg.	58	0	0	0	0	0	0	0	0	0	0	0	58	61	
Srikail	1,649												1,649	18,432	4,904
Daily Avg.	53	0	0	0	0	0	0	0	0	0	0	0	53	50	
Sundalpur	26												26	219	0
Daily Avg.	1	0	0	0	0	0	0	0	0	0	0	0	1	1	
Sylhet	2,312												2,312	20,362	1,298
Daily Avg.	75	0	0	0	0	0	0	0	0	0	0	0	75	56	
Titas	49,706												49,706	556,608	126,334
Daily Avg.	1,603	0	0	0	0	0	0	0	0	0	0	0	1,603	1,525	
Begumganj	69												69	207	0
Daily Avg.	2	0	0	0	0	0	0	0	0	0	0	0	2	1	
Rupganj	0												0	0	34
Daily Avg.	0	0	0	0	0	0	0	0	0	0	0	0	0	0	
Total (000'bl	120,860	0	0	0	0	0	0	0	0	0	0	0	120,860	1,375,408	296
Daily Avg. (000'bbl)	3,899	0	0	0	0	0	0	0	0	0	0	0	3,899	3,768	1

Conditions of Field and Well upto January 2019



Well	company	well type	Discovery	production start	Drilled depth (ft)	Pressure	Pressure type	Completion Zone
Field : Bakharabad								
BKB-1	BGFCL	Vertical	1969	June,1969	9309		FWHP	J
BKB-2	BGFCL	Directional	1969	October,1981	7496	248-274	FWHP	G
BKB-3	BGFCL	Directional	1969	April,1982	9339	356-412	FWHP	G
BKB-4	BGFCL	Directional	1969	June,1982	9430			D
BKB-5	BGFCL	Directional	1969	Sept,1982	9675	1555-1646	FWHP	B
BKB-6	BGFCL	Directional	1969	March,1989	8785			J
BKB-7	BGFCL	Directional	1969	July,1989	8605		FWHP	J
BKB-8	BGFCL	Directional	1969	Sept,1989	8840	490-523	FWHP	J
BKB-9	BGFCL	Vertical	1969	August,2013	8318	1005-1097	FWHP	G
BKB-10	BGFCL	Directional	1969	June,2016	9291	1010-1102	FWHP	K
Field : Bangura								
Bangura-1	Tullow		2004			887-940	FWHP	D
Bangura-2	Tullow		2004			587-685	FWHP	D/E
Bangura-3	Tullow		2004			719-789	FWHP	D
Bangura-6	Tullow		2004			708-780	FWHP	D
Bangura-5	Tullow		2004			579-621	FWHP	D
Field : Beani Bazar								
BB-1	SGFL		1981	July,1999	13480	580-620	SIWHP	Upper
BB-2	SGFL		1981	July,1999	12048	3210-3220	FWHP	Upper
Field : Bibiyana								
BY-1	Chevron		1998			1547-2007	FWHP	BB60, BB66
BY-2	Chevron		1998			1313-1390	FWHP	BB60, BH20A, BH20E
BY-3	Chevron		1998			1363-1403	FWHP	BB70
BY-4	Chevron		1998			1330-1390	FWHP	BH10
BY-5	Chevron		1998			1254-1299	FWHP	BH20A, BH20B, BH20C, BH20D
BY-6	Chevron		1998			1250-1486	FWHP	BB70
BY-7	Chevron		1998			1454-1566	FWHP	BH10
BY-8	Chevron		1998			1270-1297	FWHP	BH20A, BH20B
BY-9	Chevron		1998			1243-1273	FWHP	BH10
BY-10	Chevron		1998			1465-1533	FWHP	BB60
BY-11	Chevron		1998			1260-1284	FWHP	BH20A, BH20B
BY-12	Chevron		1998			1259-1332	FWHP	BB70
BY-13	Chevron		1998			1300-1356	FWHP	BH20A, BH20B
BY-14	Chevron		1998			1342-1632	FWHP	BH20A, BH20B
BY-15	Chevron		1998			2189-2240	FWHP	BB60
BY-16	Chevron		1998			1381-1644	FWHP	BH10, BH20D

Conditions of Field and Well upto January 2019



Well	company	well type	Discovery	production start	Drilled depth (ft)	Pressure	Pressure type	Completion Zone
BY-17	<i>Chevron</i>		<i>1998</i>			<i>2104-2229</i>	<i>FWHP</i>	<i>BB60</i>
BY-18	<i>Chevron</i>		<i>1998</i>			<i>1904-2218</i>	<i>FWHP</i>	<i>BB60</i>
BY-19	<i>Chevron</i>		<i>1998</i>			<i>1354-1477</i>	<i>FWHP</i>	<i>BH10, BH20A</i>
BY-20	<i>Chevron</i>		<i>1998</i>			<i>1248-1262</i>	<i>FWHP</i>	<i>BH20D, BH20A, BH10</i>
BY-21	<i>Chevron</i>		<i>1998</i>			<i>1333-1348</i>	<i>FWHP</i>	<i>BH20A, BH20B, BH10</i>
BY-22	<i>Chevron</i>		<i>1998</i>			<i>1552-1586</i>	<i>FWHP</i>	<i>BB60</i>
BY-23	<i>Chevron</i>		<i>1998</i>			<i>1739-2021</i>	<i>FWHP</i>	<i>BH10, BH20A, BH20B, BH20C</i>
BY-24	<i>Chevron</i>		<i>1998</i>			<i>1337-2091</i>	<i>FWHP</i>	<i>BB60</i>
BY-25	<i>Chevron</i>		<i>1998</i>			<i>1728-1857</i>	<i>FWHP</i>	<i>BB60, BB66</i>
BY-26	<i>Chevron</i>		<i>1998</i>			<i>1877-2094</i>	<i>FWHP</i>	<i>BB60, BB64</i>
Field : Chattak								
Ch-1	SGFL		1959					
Field : Fenchuganj								
Fenchuganj-2	<i>BAPEX</i>		<i>1988</i>	<i>May, 2004</i>				
Fenchuganj-3	<i>BAPEX</i>		<i>1988</i>	<i>January, 2005</i>		<i>2004-2010</i>		<i>upper</i>
Fenchuganj-4	<i>BAPEX</i>		<i>1988</i>			<i>2037-2065</i>		
Field : Feni								
Feni-1	<i>BAPEX</i>		<i>1981</i>					
Feni-2	<i>BAPEX</i>		<i>1981</i>					
Feni-3	<i>BAPEX</i>		<i>1981</i>					
Feni-4	<i>BAPEX</i>		<i>1981</i>					
Feni-5	<i>BAPEX</i>		<i>1981</i>					
Field : Habiganj								
Hbj-1	<i>BGFCL</i>	<i>Vertical</i>	<i>1963</i>	<i>Feb, 1969</i>	<i>11500</i>		<i>FWHP</i>	<i>upper</i>
Hbj-2	<i>BGFCL</i>	<i>Vertical</i>	<i>1963</i>	<i>Feb, 1969</i>	<i>5100</i>		<i>FWHP</i>	<i>upper</i>
Hbj-3	<i>BGFCL</i>	<i>Vertical</i>	<i>1963</i>	<i>July, 1985</i>	<i>5282</i>	<i>1478-1486</i>	<i>FWHP</i>	<i>upper</i>
Hbj-4	<i>BGFCL</i>	<i>Vertical</i>	<i>1963</i>	<i>May, 1985</i>	<i>5249</i>	<i>1460-1467</i>	<i>FWHP</i>	<i>upper</i>
Hbj-5	<i>BGFCL</i>	<i>Directional</i>	<i>1963</i>	<i>Feb, 1992</i>	<i>11552</i>	<i>1440-1446</i>	<i>FWHP</i>	<i>upper</i>
Hbj-6	<i>BGFCL</i>	<i>Vertical</i>	<i>1963</i>	<i>Feb, 1992</i>	<i>5515</i>	<i>1375-1379</i>	<i>FWHP</i>	<i>upper</i>
Hbj-7	<i>BGFCL</i>	<i>Vertical</i>	<i>1963</i>	<i>April, 2000</i>	<i>10236</i>	<i>1331-1139</i>	<i>FWHP</i>	<i>upper</i>
Hbj-8	<i>BGFCL</i>	<i>Vertical</i>	<i>1963</i>	<i>May, 2000</i>	<i>5280</i>			<i>upper</i>
Hbj-9	<i>BGFCL</i>	<i>Vertical</i>	<i>1963</i>	<i>July, 1998</i>	<i>5249</i>			<i>upper</i>
Hbj-10	<i>BGFCL</i>	<i>Vertical</i>	<i>1963</i>	<i>Apr, 2000</i>	<i>5133</i>	<i>1322-1331</i>	<i>FWHP</i>	<i>upper</i>
Hbj-11	<i>BGFCL</i>	<i>Vertical</i>	<i>1963</i>	<i>january, 2008</i>	<i>10499</i>	<i>1417-1423</i>	<i>FWHP</i>	<i>upper</i>
Field : Jalalabad								
JB-1	<i>Chevron</i>		<i>1989</i>			<i>1333-1436</i>	<i>FWHP</i>	<i>BB60, BB50</i>

Conditions of Field and Well upto January 2019



Well	company	well type	Discovery	production start	Drilled depth (ft)	Pressure	Pressure type	Completion Zone
JB-2	<i>Chevron</i>		<i>1989</i>			<i>1279-1294</i>	<i>FWHP</i>	<i>BB50, BB60</i>
JB-3	<i>Chevron</i>		<i>1989</i>			<i>1332-1375</i>	<i>FWHP</i>	<i>BB50, BB60</i>
JB-4	<i>Chevron</i>		<i>1989</i>			<i>1365-1425</i>	<i>FWHP</i>	<i>BB60</i>
JB-6	<i>Chevron</i>		<i>1989</i>			<i>1354-1362</i>	<i>FWHP</i>	<i>BB60, BB50</i>
JB-7	<i>Chevron</i>		<i>1989</i>			<i>1666-1679</i>	<i>FWHP</i>	<i>BB20</i>
JB-8	<i>Chevron</i>		<i>1989</i>			<i>1362-1370</i>	<i>FWHP</i>	<i>BB50, BB60</i>
Field : Kailas Tila								
KTL-1	<i>SGFL</i>		<i>1962</i>	<i>June, 1983</i>	<i>12417</i>	<i>0</i>	<i>SIWHP</i>	
KTL-2	<i>SGFL</i>		<i>1962</i>	<i>Feb, 1995</i>		<i>2225-2230</i>	<i>FWHP</i>	
KTL-3	<i>SGFL</i>		<i>1962</i>	<i>March, 1995</i>		<i>2470-2495</i>	<i>FWHP</i>	
KTL-4	<i>SGFL</i>		<i>1962</i>	<i>March, 1997</i>		<i>2360-2410</i>	<i>FWHP</i>	
KTL-5	<i>SGFL</i>		<i>1962</i>	<i>Sep, 2006</i>		<i>0</i>	<i>SIWHP</i>	
KTL-6	<i>SGFL</i>		<i>1962</i>	<i>Aug, 2007</i>		<i>2490-2495</i>	<i>FWHP</i>	
KTL-7	<i>SGFL</i>		<i>1962</i>			<i>0</i>	<i>SIWHP</i>	
Field : Kamta								
Kamta-1	<i>BGFCL</i>	<i>Vertical</i>	<i>1981</i>	<i>july,1982</i>	<i>11857</i>			<i>N/A</i>
Field : Meghna								
M-1	<i>BGFCL</i>	<i>Vertical</i>	<i>2004</i>	<i>july,1990</i>	<i>10069</i>	<i>1400-1450</i>	<i>FWHP</i>	<i>A,E,F & G</i>
Field : Moulavi Bazar								
MV Bazar-2	<i>Chevron</i>		<i>1997</i>			<i>800-820</i>	<i>FWHP</i>	<i>BB70</i>
MV Bazar-3	<i>Chevron</i>		<i>1997</i>			<i>800-820</i>	<i>FWHP</i>	<i>BB70</i>
MV Bazar-4	<i>Chevron</i>		<i>1997</i>			<i>946-952</i>	<i>FWHP</i>	<i>BB20</i>
MV Bazar-5	<i>Chevron</i>		<i>1997</i>			<i>0</i>	<i>SIWHP</i>	<i>BB60</i>
MV Bazar-6	<i>Chevron</i>		<i>1997</i>			<i>822-890</i>	<i>FWHP</i>	<i>BB20</i>
MV Bazar-7	<i>Chevron</i>		<i>1997</i>			<i>844-901</i>	<i>FWHP/SIWHP</i>	<i>BB20</i>
MV Bazar-9	<i>Chevron</i>		<i>1997</i>			<i>0</i>	<i>SIWHP</i>	<i>BB46, BB48, BB60</i>
Field : Narshingdi								
N-1	<i>BGFCL</i>	<i>vertical</i>	<i>1990</i>	<i>october,1990</i>	<i>11320</i>	<i>1143-1197</i>	<i>FWHP</i>	<i>BL</i>
N-2	<i>BGFCL</i>	<i>vertical</i>	<i>1990</i>	<i>february,2007</i>	<i>10778</i>	<i>1015-1097</i>	<i>FWHP</i>	<i>BL</i>
Field : Rashidpur								
RP-1	<i>SGFL</i>		<i>1960</i>			<i>1290-1291</i>	<i>FWHP</i>	<i>Upper</i>
RP-2	<i>SGFL</i>		<i>1960</i>			<i>73</i>	<i>SIWHP</i>	<i>Lower</i>
RP-3	<i>SGFL</i>		<i>1960</i>			<i>1548-1568</i>	<i>FWHP</i>	<i>Lower</i>
RP-4	<i>SGFL</i>		<i>1960</i>			<i>1450-1655</i>	<i>FWHP</i>	<i>Lower</i>
RP-5	<i>SGFL</i>		<i>1960</i>			<i>2291</i>	<i>SIWHP</i>	<i>Lower</i>
RP-6	<i>SGFL</i>		<i>1960</i>			<i>870</i>	<i>SIWHP</i>	<i>A</i>

Conditions of Field and Well upto January 2019



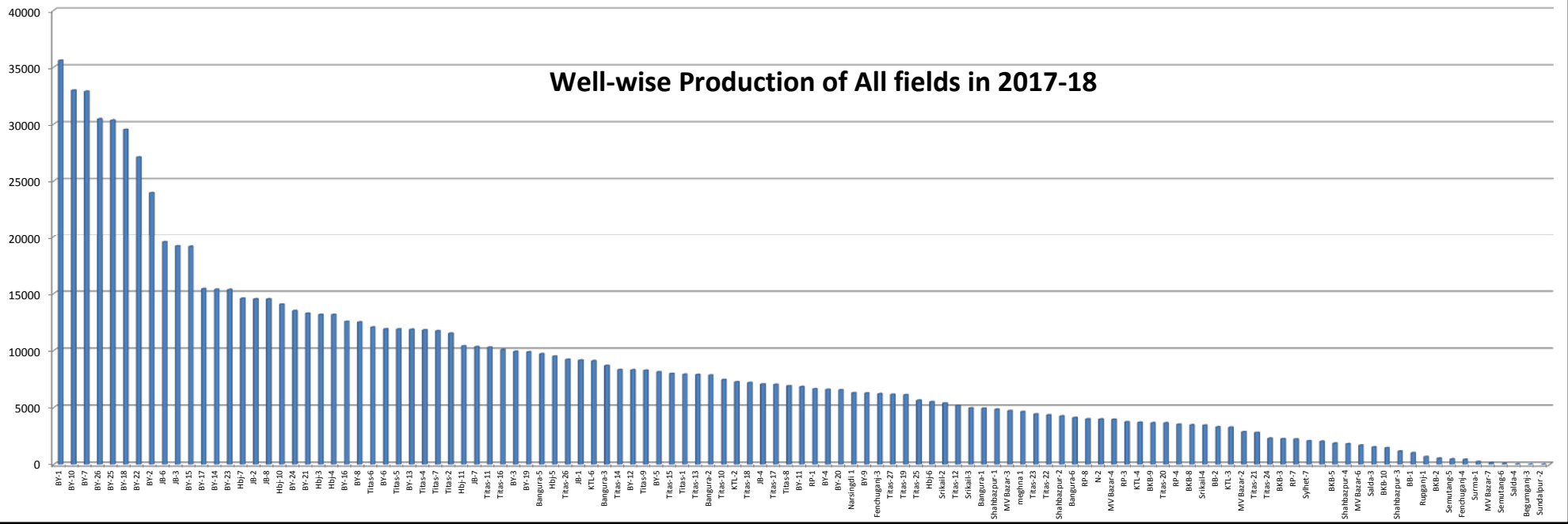
Well	company	well type	Discovery	production start	Drilled depth (ft)	Pressure	Pressure type	Completion Zone
RP-7	SGFL		1960			1308-1338	FWHP	Lower
RP-8	SGFL		1960			1600-1625	FWHP	Upper
Field : Salda Nadi								
Salda-1	BAPEX		1995					
Salda-2	BAPEX		1995					
Salda-3	BAPEX	Directional	1995	January, 2012		639-640, 698-700		Upper/Lower
Salda-4	BAPEX		1995					
Field : Sangu								
Sangu-1	BGFCL		1996					
Sangu-3z	BGFCL		1996					
Sangu-4	BGFCL		1996					
Sangu-5	BGFCL		1996					
Sangu-7	BGFCL		1996					
Sangu-8	BGFCL		1996					
Sangu-9	BGFCL		1996					
Sangu-10	BGFCL		1996					
Sangu-11	BGFCL		1996					
Field : Semutang								
Semutang-5	BAPEX		1967			280-508		Lower Zone
Semutang-6	BAPEX		1967			750-1302		
Field : Shahbazpur								
Shahbazpur-1	BAPEX		1995	May, 2009		2310-3543		Lower Zone
Shahbazpur-2	BAPEX		1995			3541-4133		Lower Zone
Shahbazpur-3	BAPEX		1995			4300		Upper Zone
Shahbazpur-4	BAPEX		1995			4250		Upper Zone
Field : Srikail								
Srikail-2	BAPEX		2012			990-1016		Upper & Lower D
Srikail-3	BAPEX		2012			981-1043		Upper & Lower D
Srikail-4	BAPEX		2012			1018-1068		Upper & Lower D
Field : Sundalpur								
Sundalpur -1	BAPEX		2011					
Sundalpur -2	BAPEX		2011					
Field : Sylhet								
Sylhet-3	SGFL		1955	Aug, 1958				
Sylhet-6	SGFL		1955	Aug, 1964		800-850	SIWHP	
Sylhet-7	SGFL		1955	Apr, 2005		1750-1820	FWHP	Lower Bokabil

Conditions of Field and Well upto January 2019

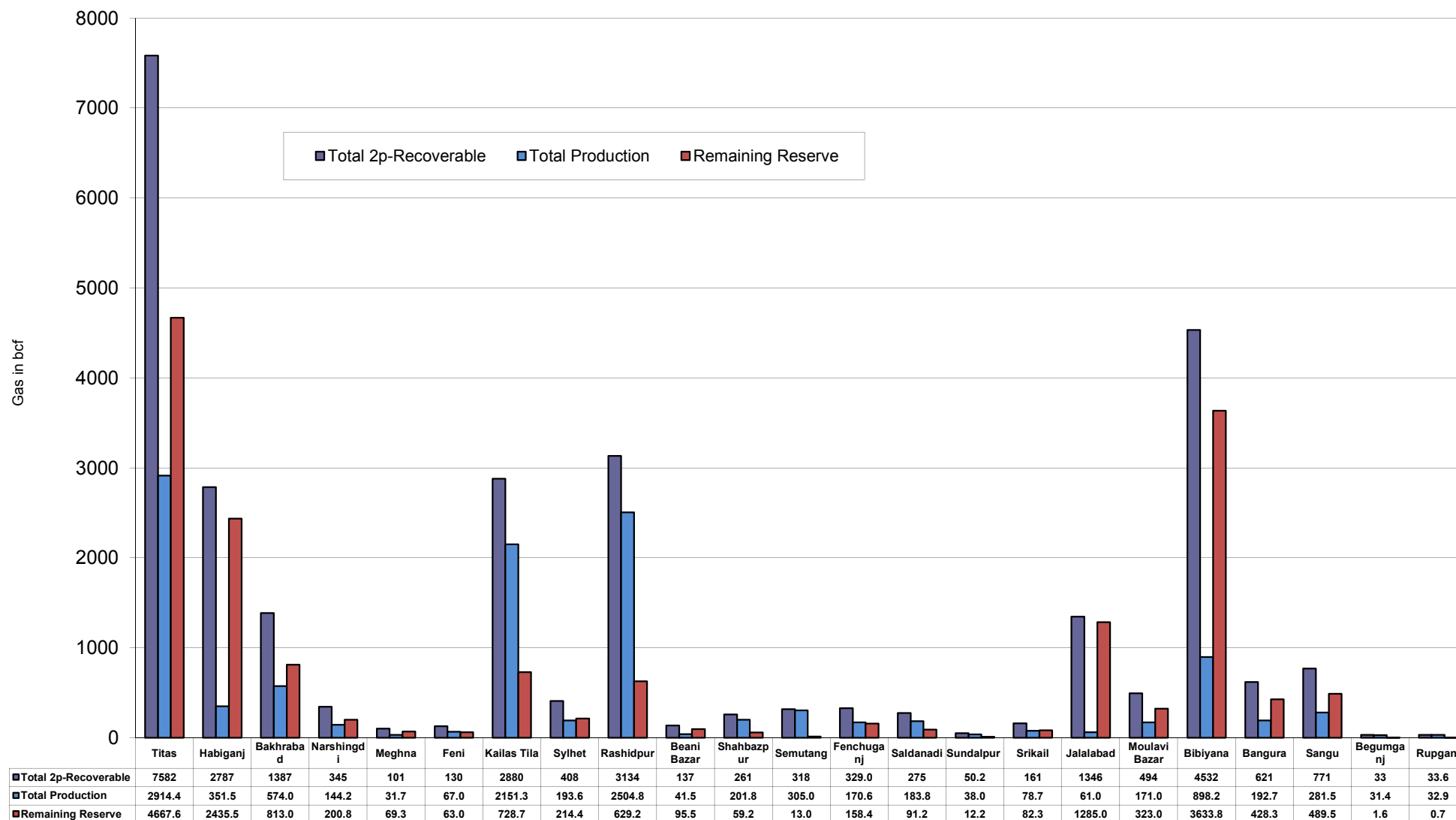


Well	company	well type	Discovery	production start	Drilled depth (ft)	Pressure	Pressure type	Completion Zone
Surma-1	SGFL		1955	June, 2010		230	SIWHP	C & D
Field : Titas								
Titas-1	BGFCL	vertical	1962	Mar,1969	12325	900-925	FWHP	A
Titas-2	BGFCL	vertical	1962	Fen,1969	10574	960-1020	FWHP	A
Titas-3	BGFCL	vertical	1962	sept,1969	9315	0	FWHP	A
Titas-4	BGFCL	vertical	1962	oct,1969	9350	1020-1070	FWHP	A
Titas-5	BGFCL	Directional	1962	jan,1981	10805	990-1035	FWHP	A
Titas-6	BGFCL	vertical	1962	Feb,1984	10072	1195-1225	FWHP	A
Titas-7	BGFCL	Directional	1962	July,1985	11006	1090-1160	FWHP	A
Titas-8	BGFCL	Directional	1962	sept,1985	11760	1000-1030	FWHP	B & C
Titas-9	BGFCL	Directional	1962	jan,1988	11893	1040-1085	FWHP	B & C
Titas-10	BGFCL	Directional	1962	may,1988	12139	1140-1180	FWHP	A
Titas-11	BGFCL	vertical	1962	Jun,1991	10462	1275-1310	FWHP	A
Titas-12	BGFCL	Directional	1962	July,2002	9873	1465-1500	FWHP	A
Titas-13	BGFCL	Directional	1962	June,2000	11487	1085-1115	FWHP	A
Titas-14	BGFCL	Directional	1962	June,2000	11004	1200-1250	FWHP	A
Titas-15	BGFCL	vertical	1962	may,2006	10446	0	FWHP	A
Titas-16	BGFCL	Directional	1962	dec,2005	11673	1205-1225	FWHP	A
Titas-17	BGFCL	vertical	1962	feb,2013	9424	1145-1175	FWHP	A
Titas-18	BGFCL	Directional	1962	august,2013	10932	1165-1190	FWHP	A
Titas-19	BGFCL	Directional	1962	may,2014	12730	1365-1415	FWHP	A
Titas-20	BGFCL	Directional	1962	oct,2013	11585	1370-1440	FWHP	A
Titas-21	BGFCL	Directional	1962	dec,2013	11631	1260-1285	FWHP	A
Titas-22	BGFCL	Directional	1962	march,2014	11926	990-1025	FWHP	A
Titas-27	BGFCL	Directional	1962	april,2014	10292	1245-1265	FWHP	A
Titas-23	BGFCL	Directional	1962	feb,2017	11988	2265-2340	FWHP	C
Titas-24	BGFCL	Directional	1962	oct,2016	12686	1120-1245	FWHP	C
Titas-25	BGFCL	vertical	1962	march,2016	11680	1300-1340	FWHP	A
Titas-26	BGFCL	Directional	1962	july,2016	12618	1840-1875	FWHP	C
Field : Begumganj								
Begumganj-3	BAPEX		1977					
Field : Rupganj								
Rupganj-1	BAPEX		2014			38-88		

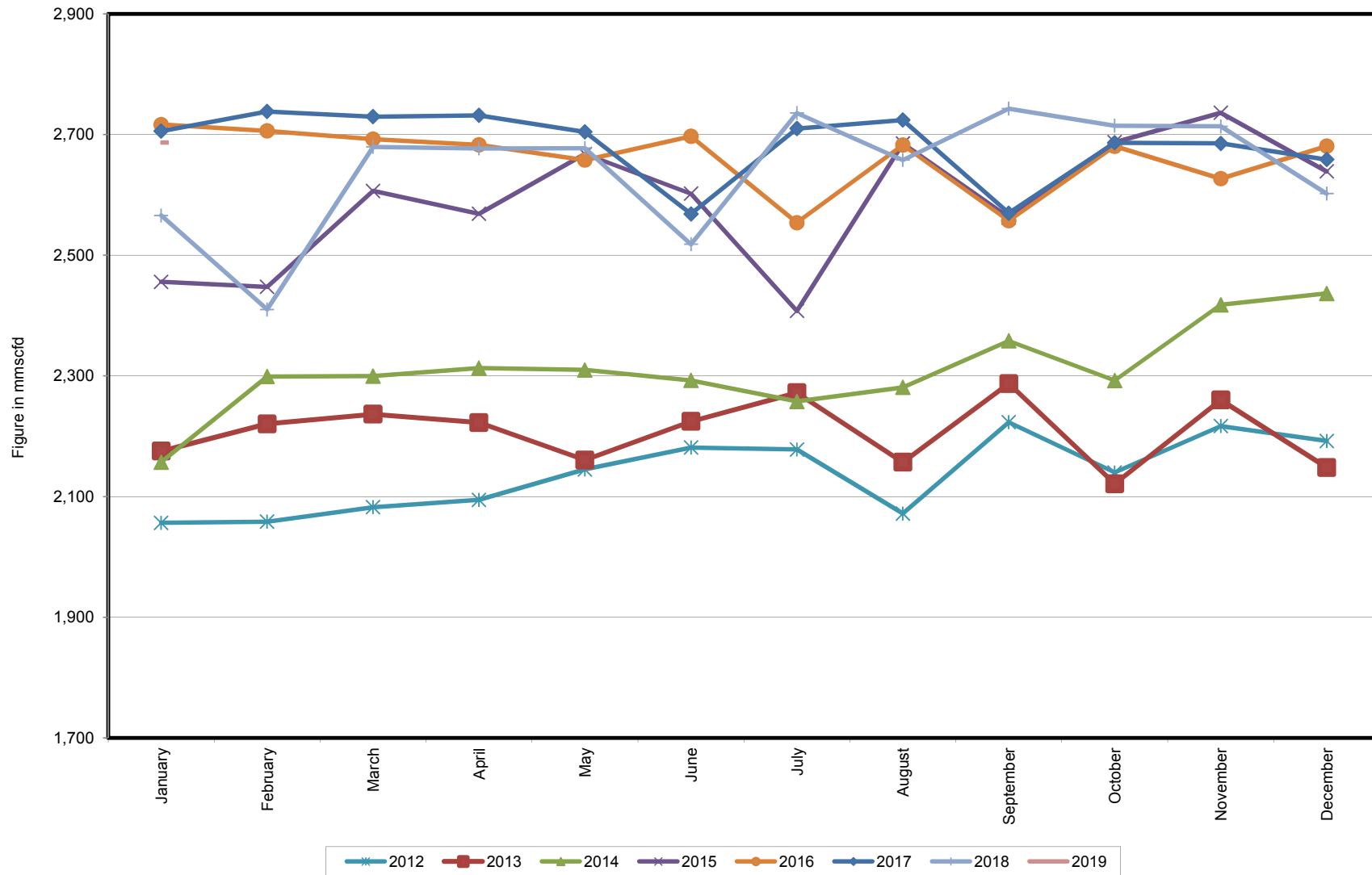
Well-wise Production of All fields in 2017-18



Reserve, Production and Remaining Reserve as of January 2019



Daily Avg. Production From January 2012 to January 2019



Field Wise Daily Avg. Production January 2019

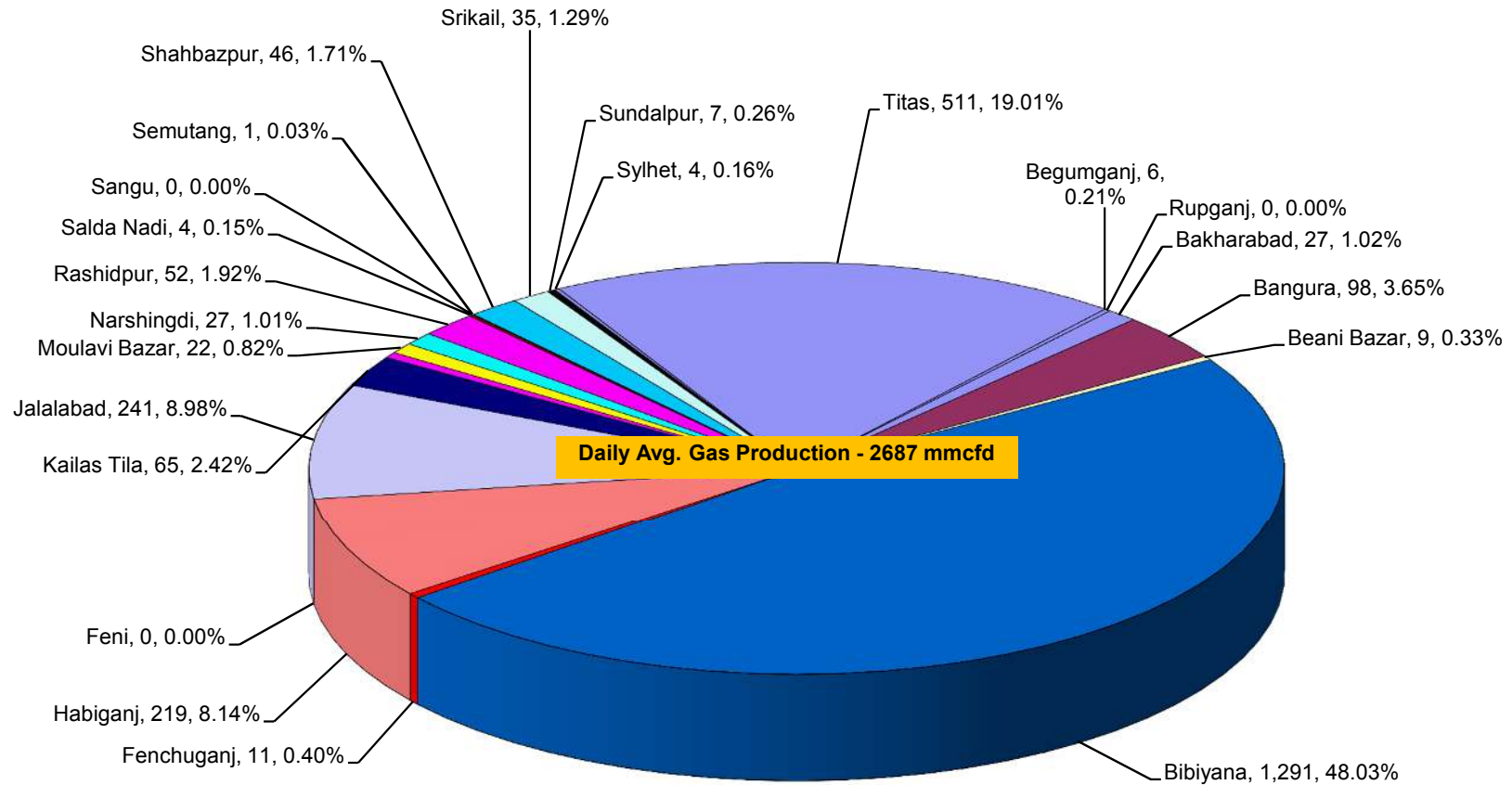
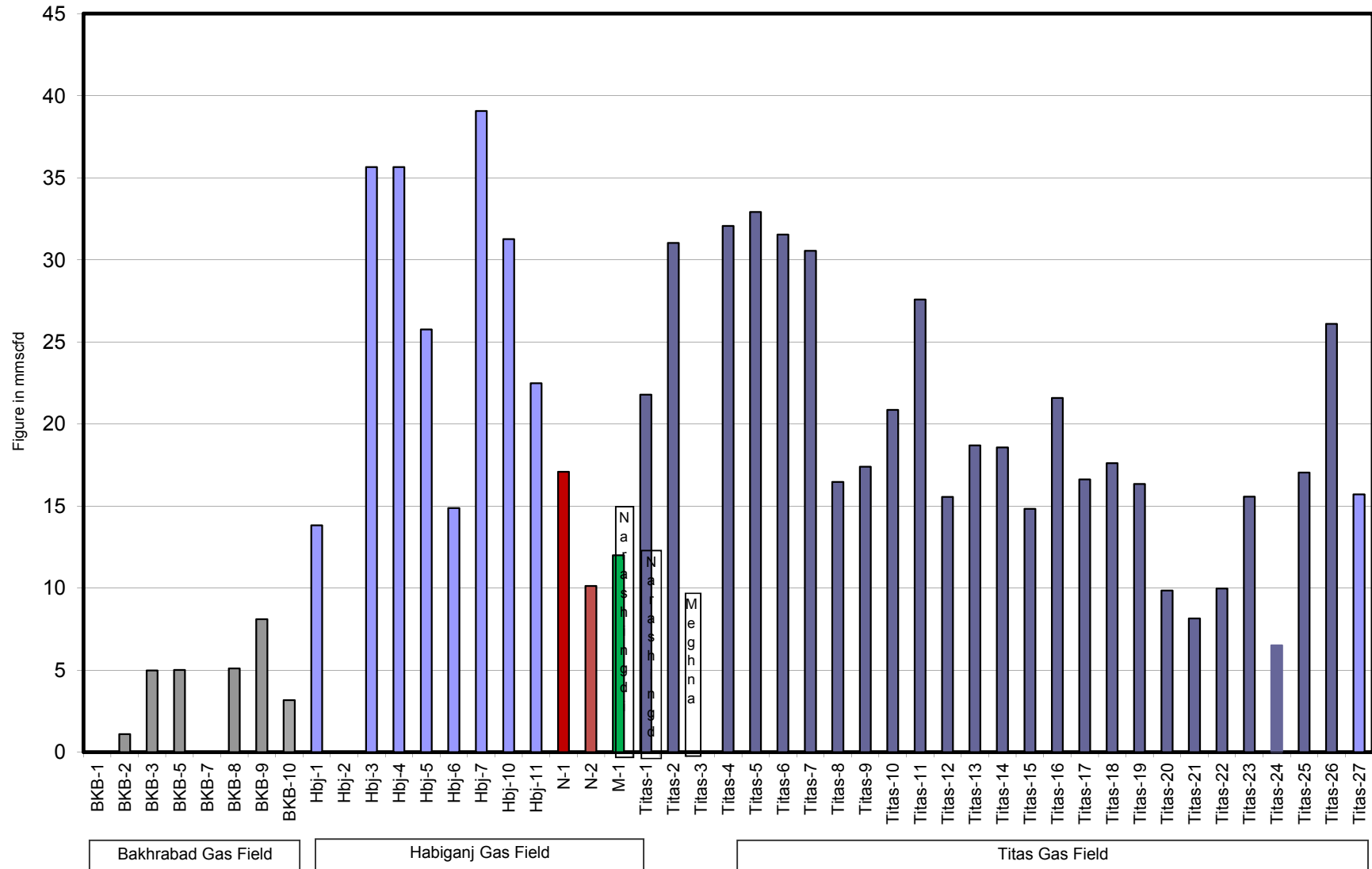


Figure in mmcf and % of total production

Wellwise Daily Avg. Production- BGFCL January 2019



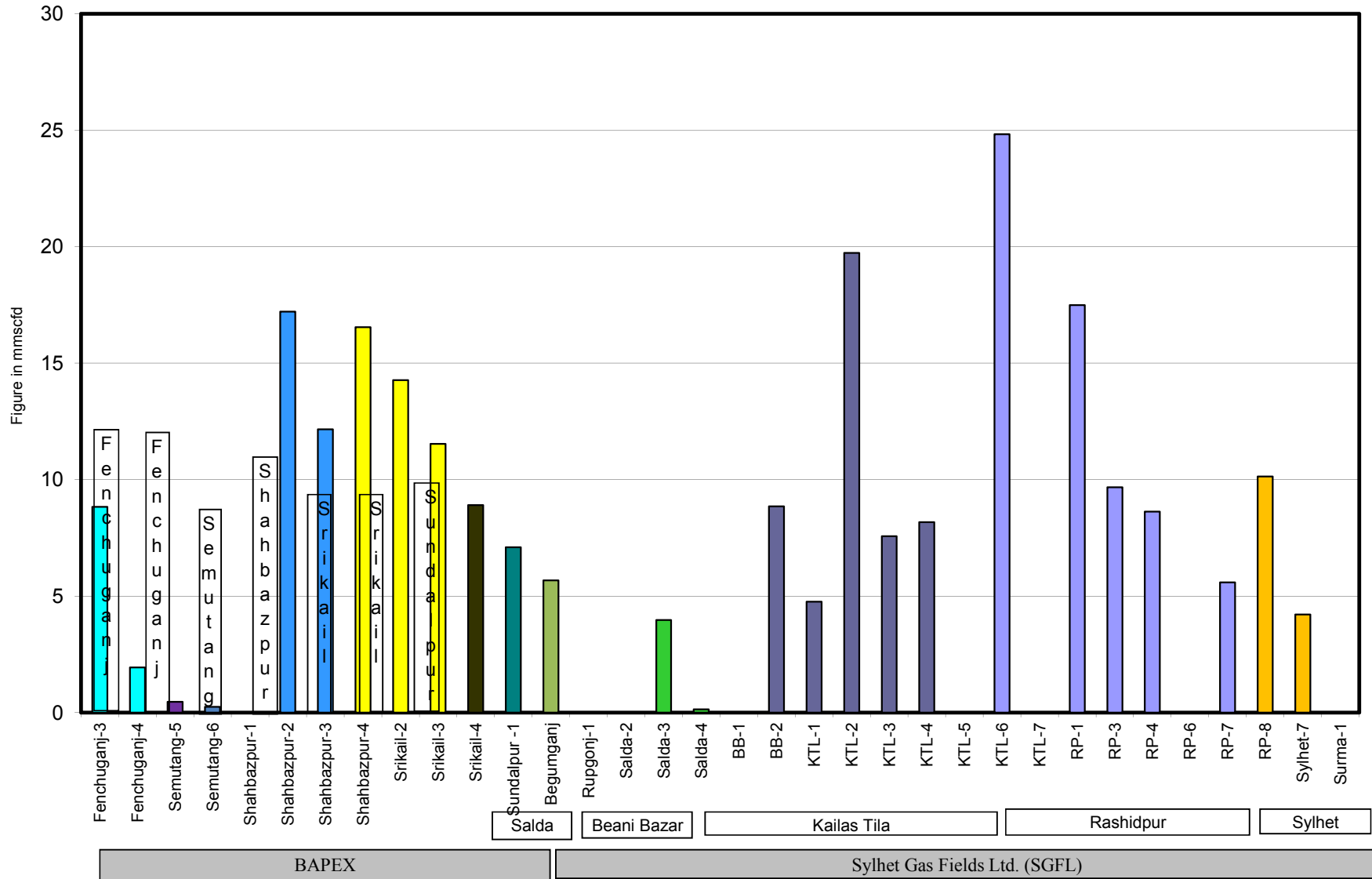
Bakhrabad Gas Field

Habiganj Gas Field

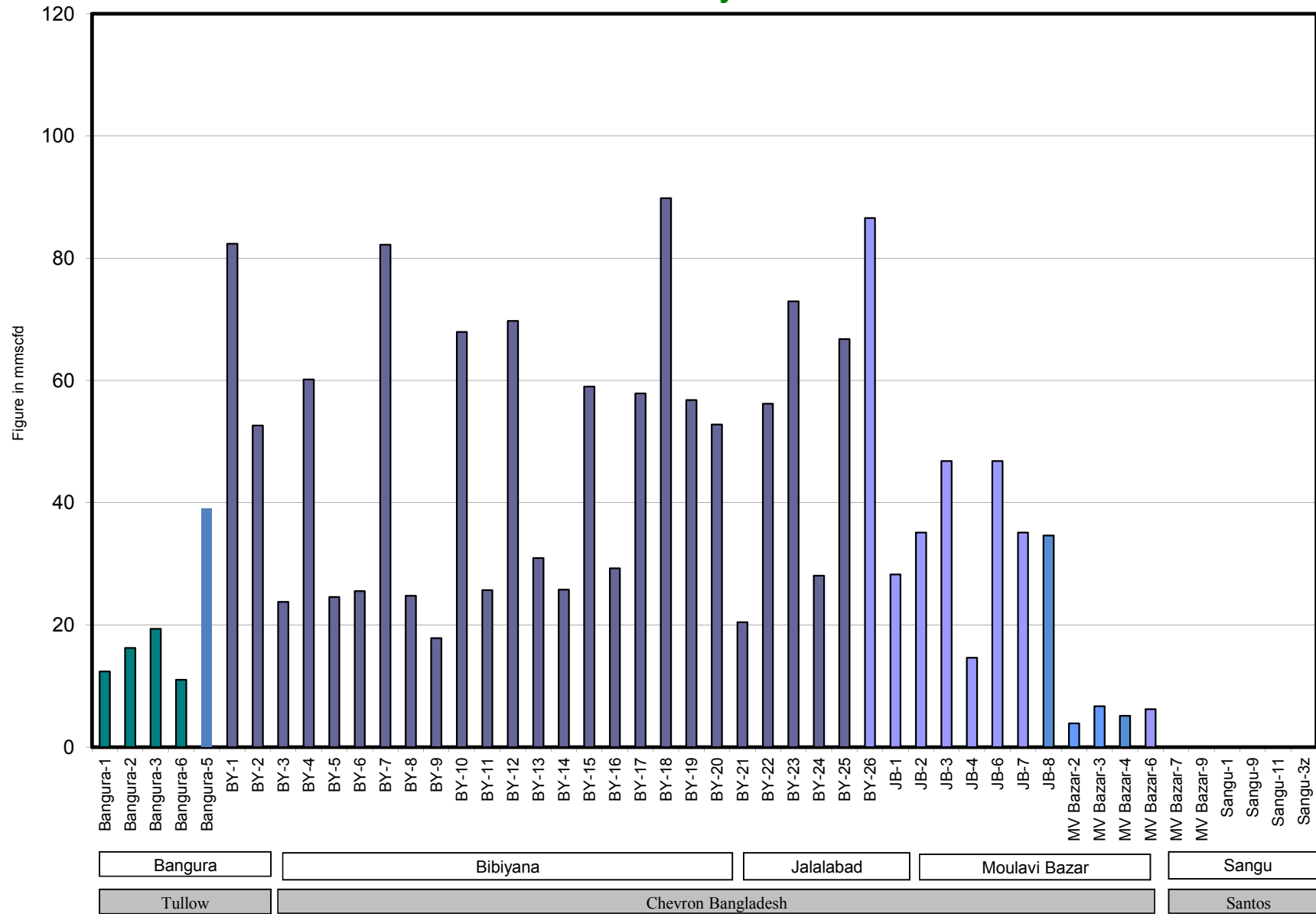
Titas Gas Field

Bangladesh Gas Fields Co. Ltd. (BGFCL)

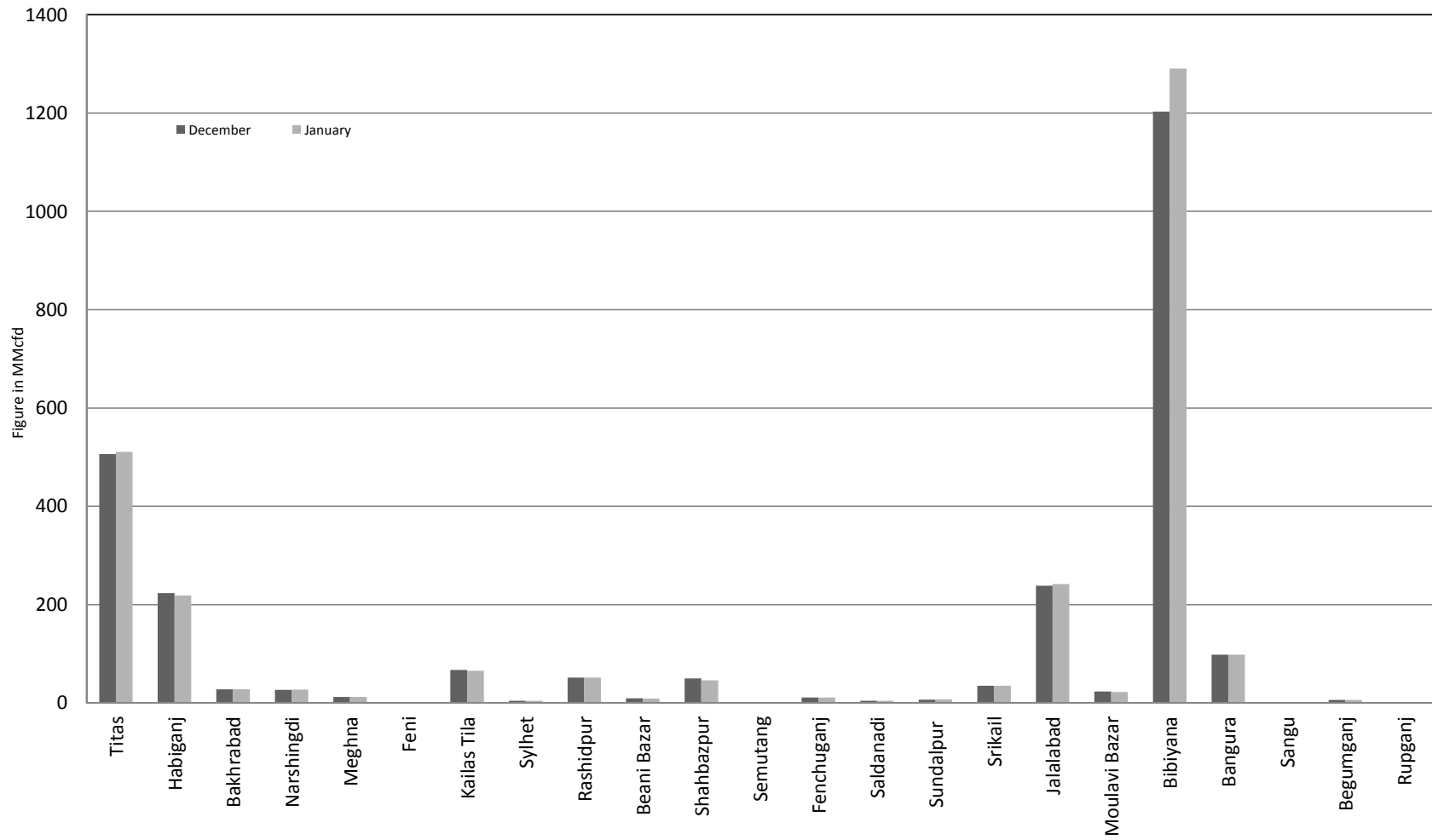
Wellwise Daily Avg. Production- Bapex and SGFL January 2019



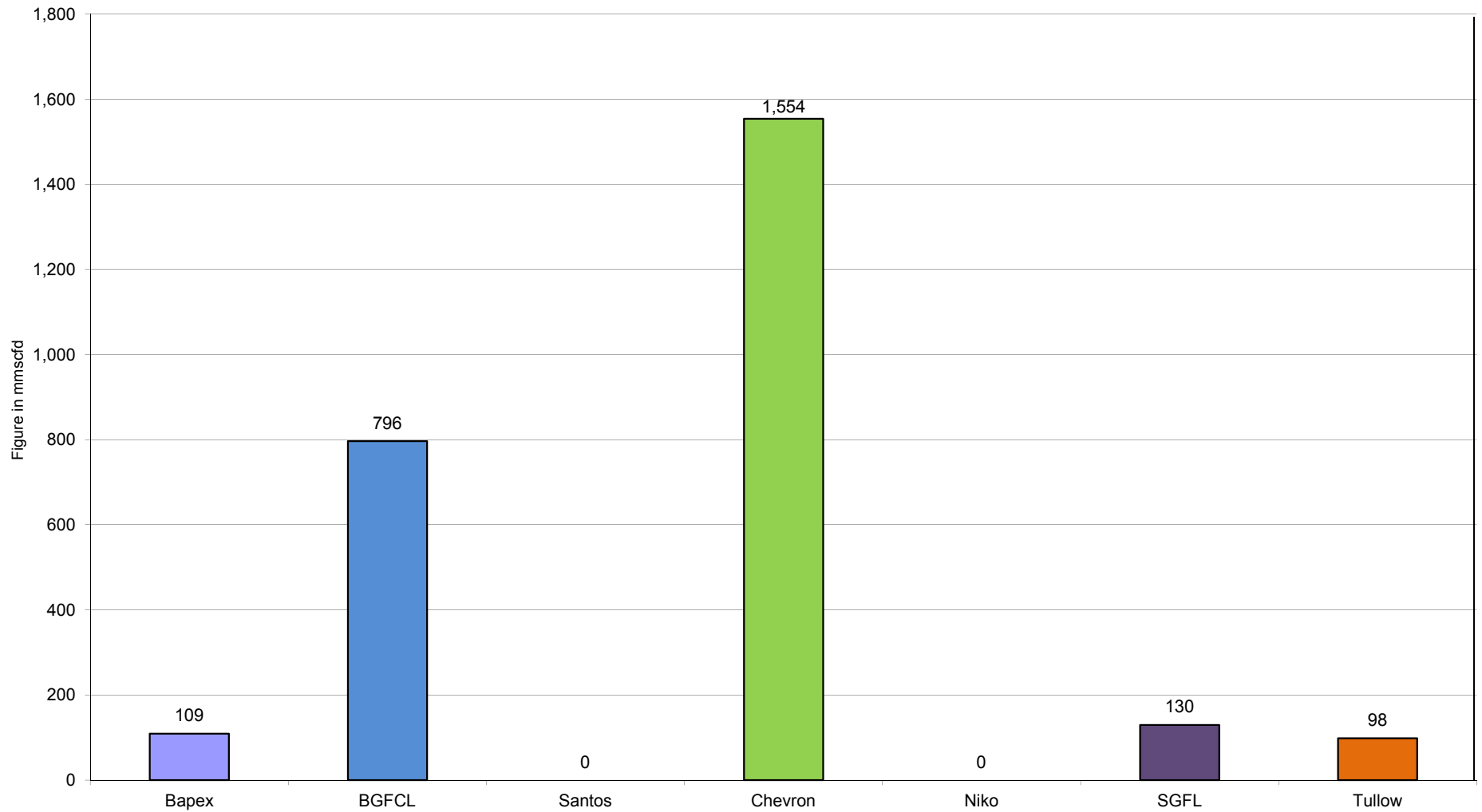
Wellwise Daily Avg. Production- IOC and JVA January 2019



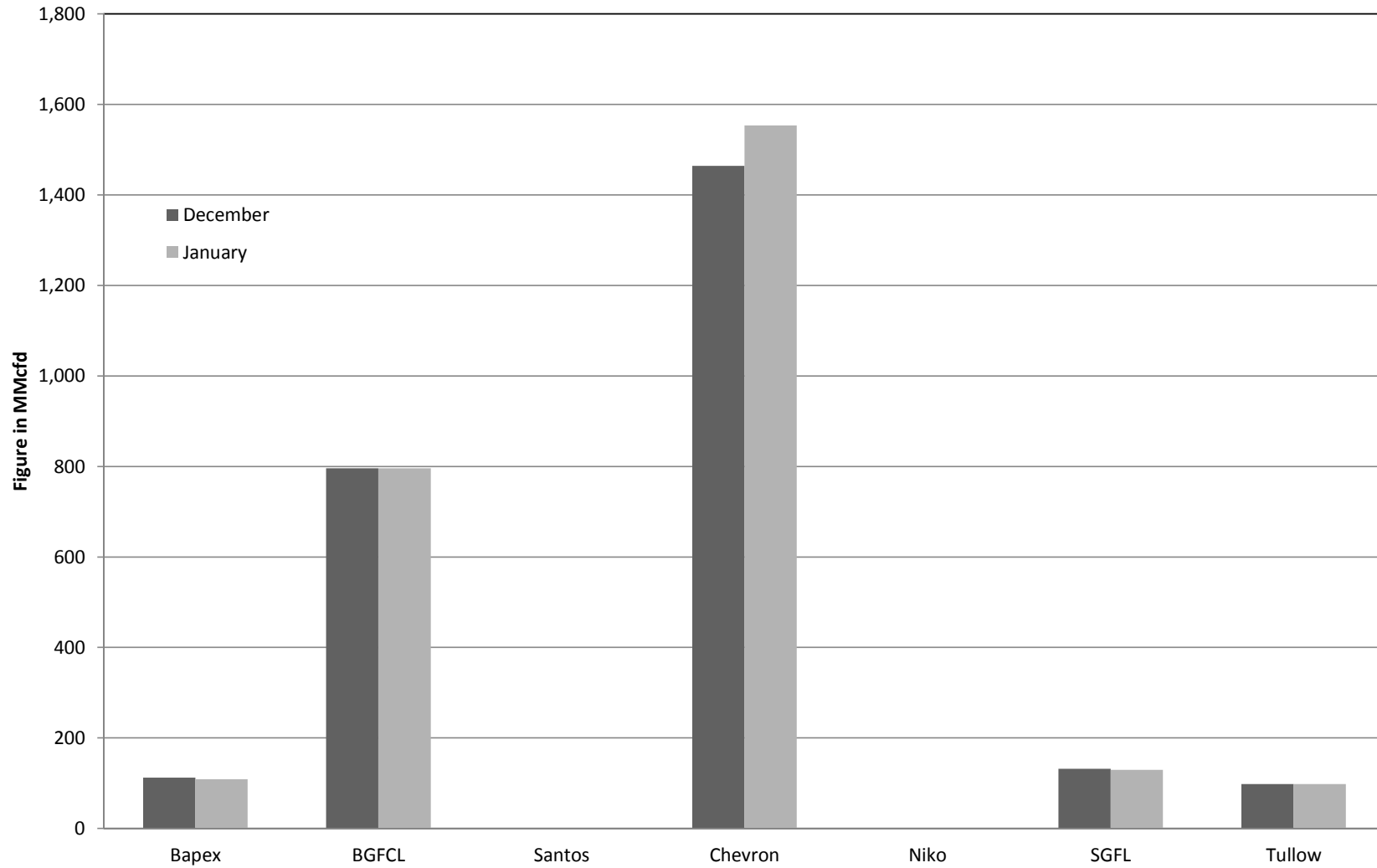
Comparison of fieldwise daily avg. Gas production between December 2018 & January 2019



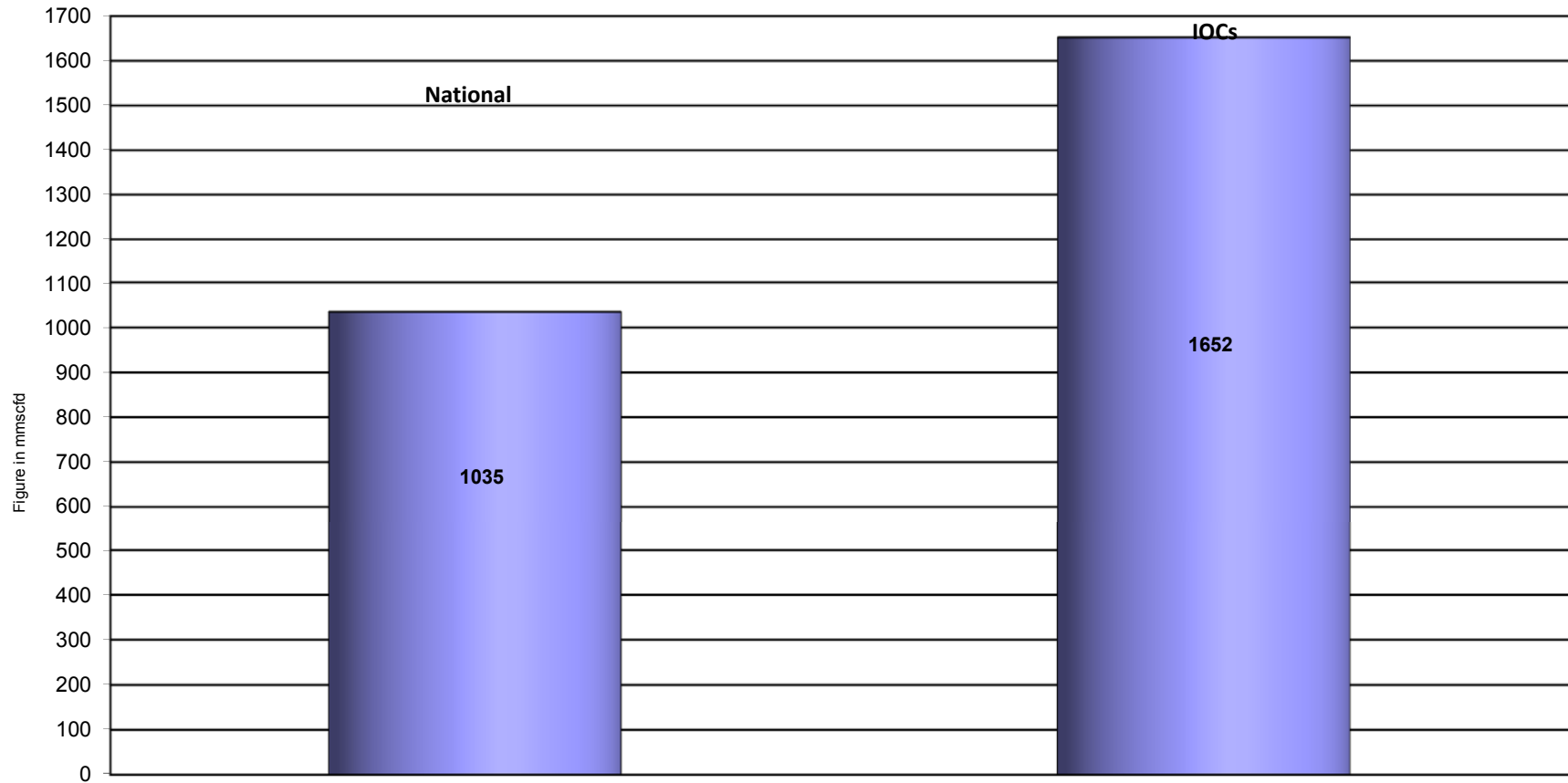
Daily Avg. Production by Operators January 2019



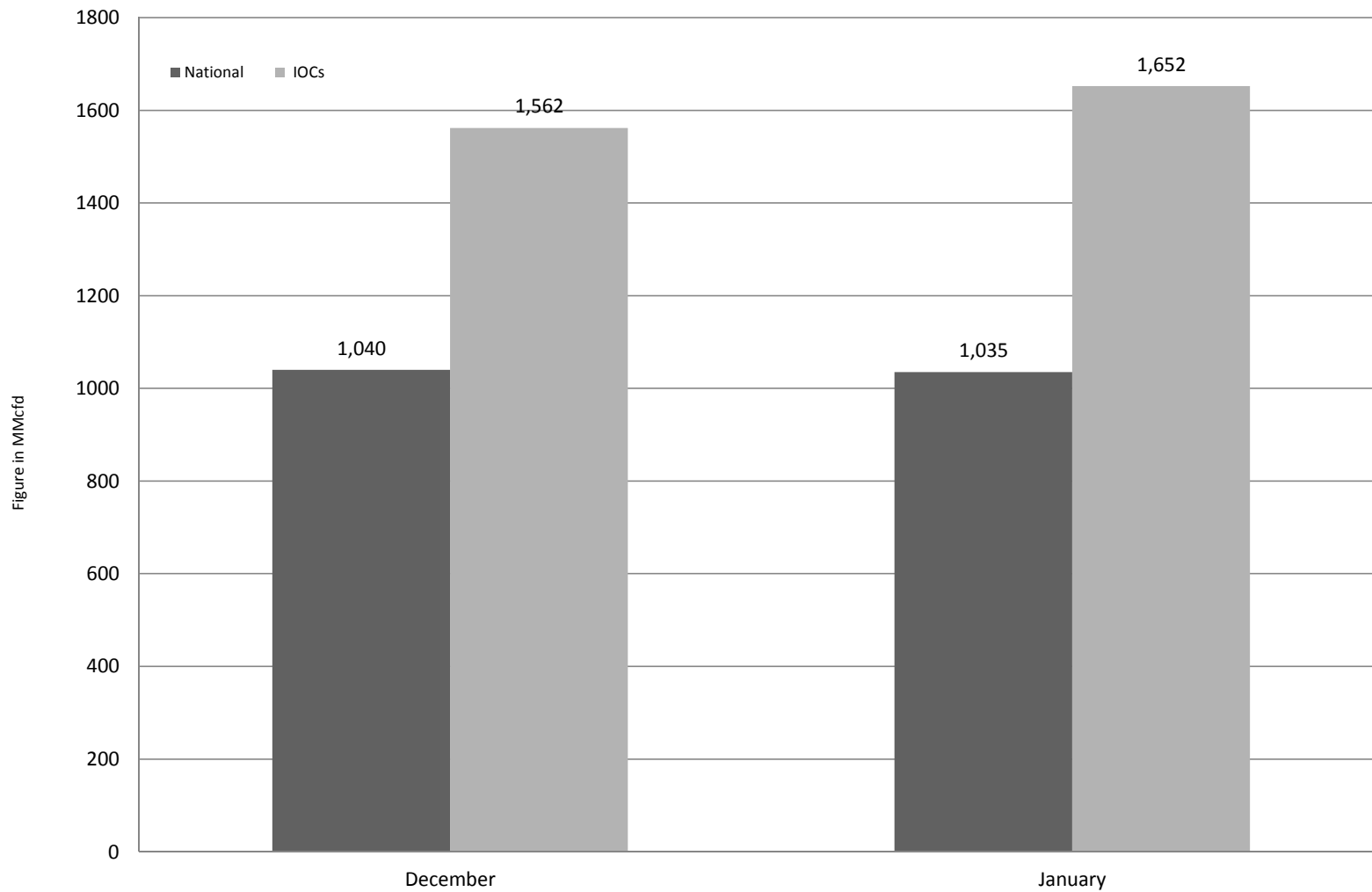
Comparison of operatorwise daily avg. Gas production between December 2018 & January 2019



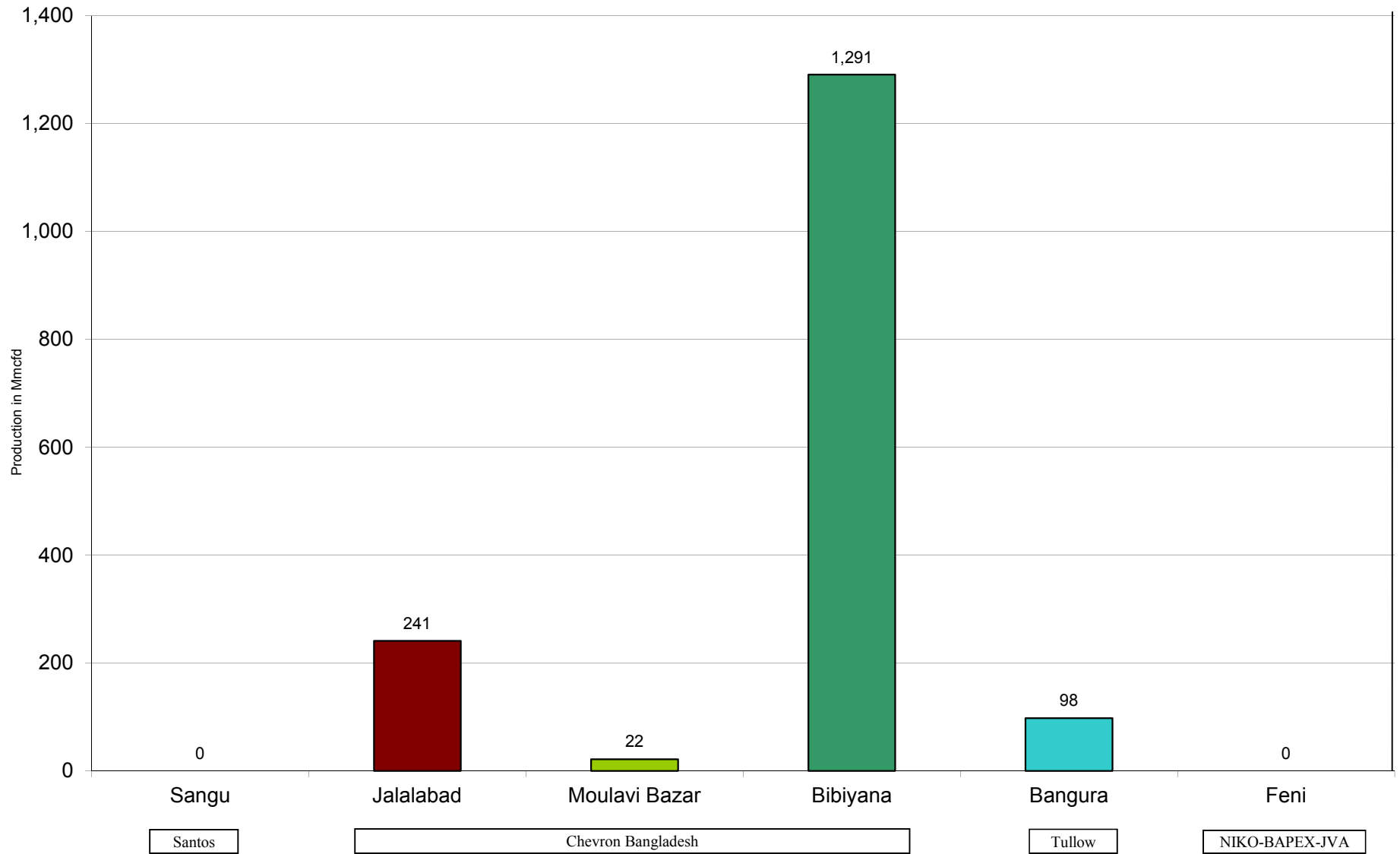
Daily Avg. Production - National Vs. IOCs January 2019



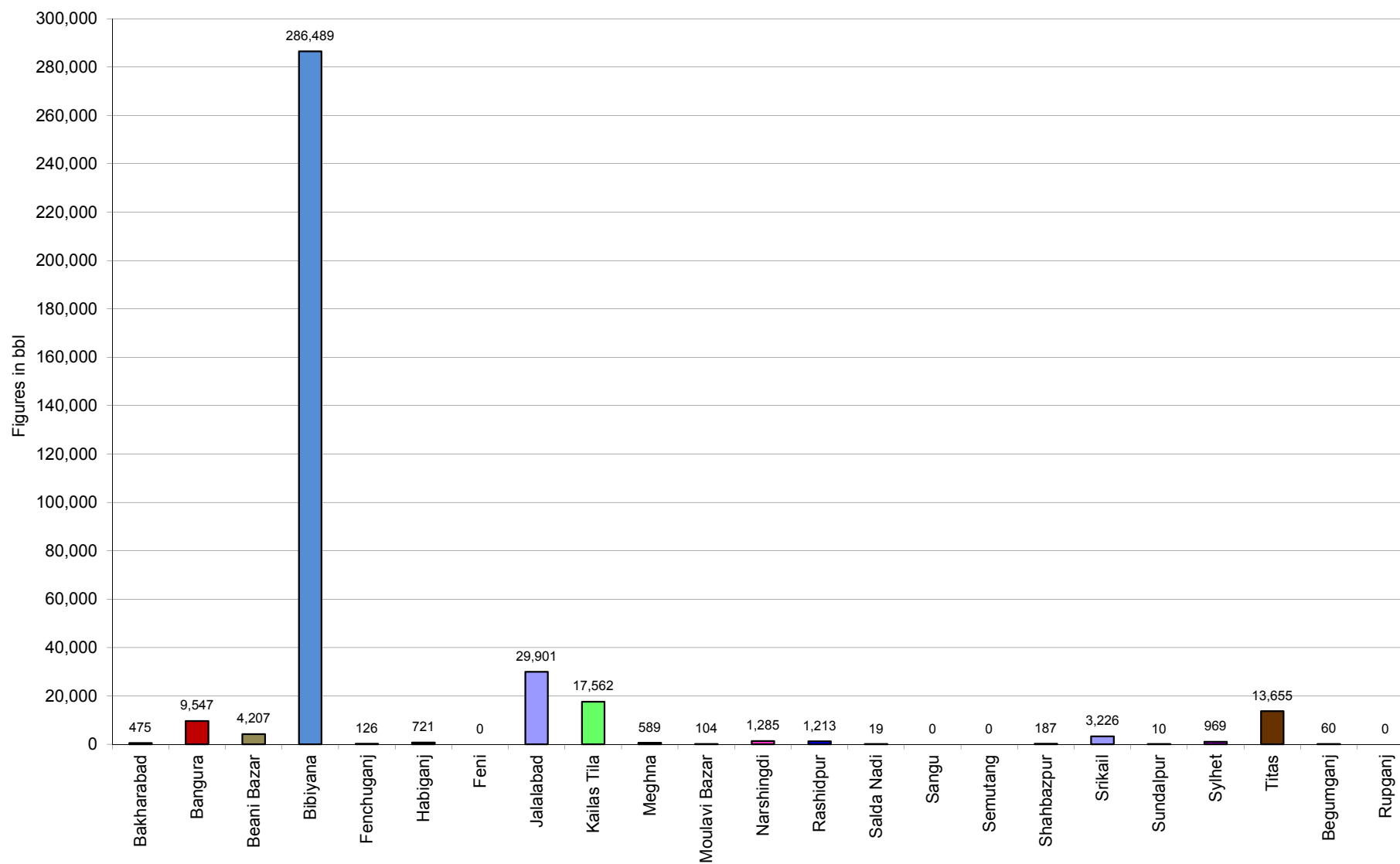
Comparison of daily avg. Gas production - National vs IOC's between December 2018 & January 2019



Daily Avg. Production - IOC and JVA January 2019



Monthly Condensate Production January 2019



Field wise Coal Reserve in Bangladesh

SI No.	Coal Basins	Proved (Mt)	Indicated (Mt)	Inferred (Mt)	Total (Mt)
1	Barapukuria	114.32	211.33	21.06+(43-64)*	346.71+(43-64)*
2	Phulbari	288	226	58	572
3	Khalashpir	-	297.57	225.92	523.49
4	Jamalganj	-	-	1053.9	1053.9
5	Dighipara	-	105	495	600
	Total	402.32	839.9	1896.88-1917.88	3139.10-3160.10

**Resources of VI Seam in second syncline are towards SW of main basin, after Wardell Armstrong*

NOTE: Reserve Figure based on Coal Sector Development Strategy (Final), HCU, PwC

Summary of Reserve and Production of Barapukuria Coal Mine As of 31 January 2019

Coal Initially Place (Proven + Probable)	346,710 kT	346.71 MT
Total Reserve of Seam VI	285,410 kT	285.41 MT
Recoverable from Seam VI Central part(Proven + Probable)	16,540 kT*	16.54 MT
Coal Production in January 2019	21.90 kT	0.02 MT
Cumulative Production as of January 2019	10,400 kT	10.40 MT
Remaining Reserve	6,140 kT	6.14 MT

NOTE: Reserve figure based on Mines and Minerals Development Report ,HCU PwC

*Figure from BCMCL, M/S Wardell Armstrong. According to Mines and Minerals Development Report ,HCU, PwC this figure is 64.8 Mt

Barapukuria Coal Mine-MPM and P Contract (BCMCL)

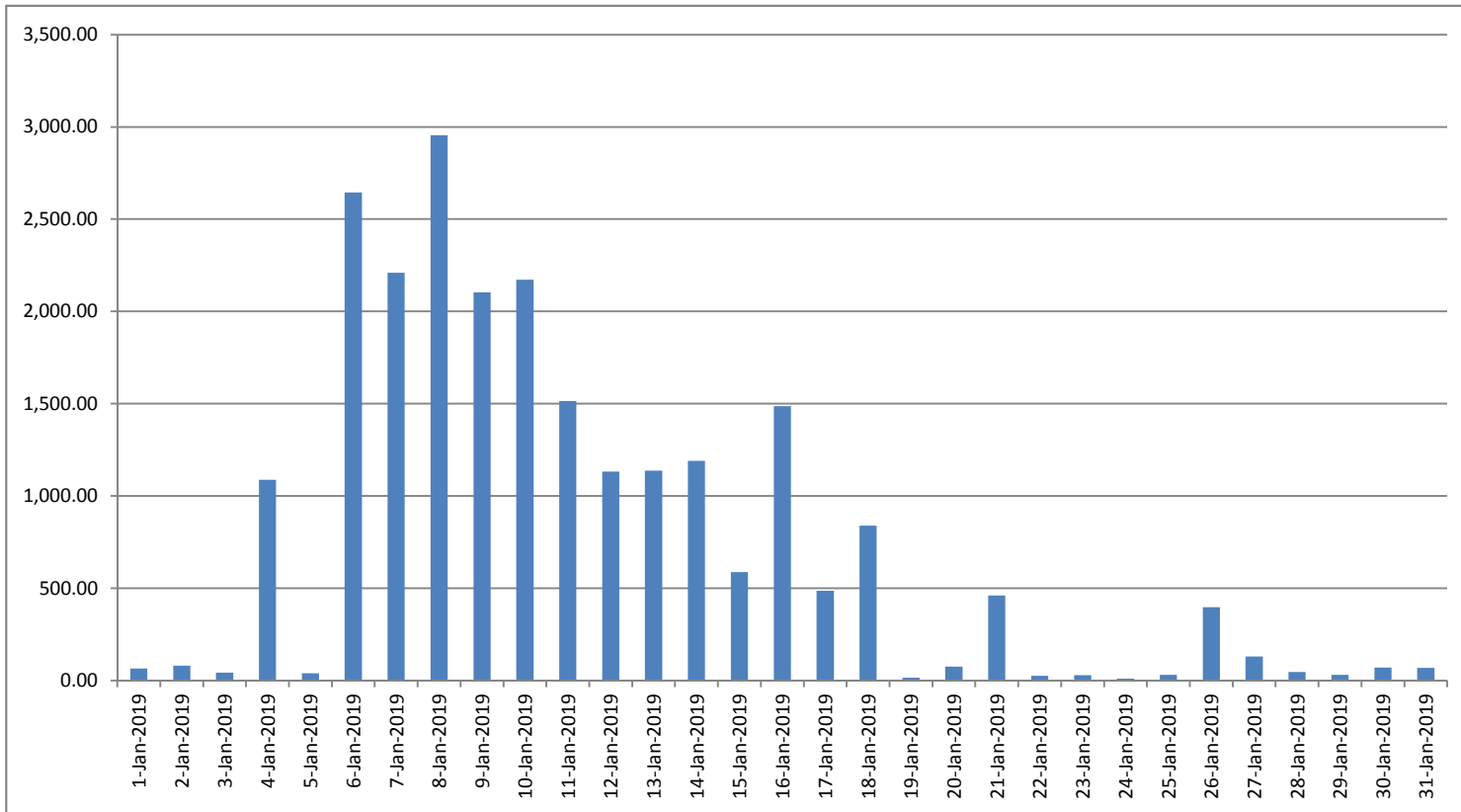
Measurement Record: Surface Belt Weigher

Measurement Period: January 2019

Day wise data	Consortium Daily Output (ton)	Consortium Cumulative Total	BCMCL Daily Output	BCMCL Cumulative Total	Remarks
1-Jan-2019	65.00	65.00	65.00	65.00	
2-Jan-2019	80.00	145.00	80.00	145.00	
3-Jan-2019	42.75	187.75	42.75	187.75	
4-Jan-2019	1,087.00	1,274.75	1,087.00	1,274.75	
5-Jan-2019	39.75	1,314.50	39.75	1,314.50	
6-Jan-2019	2,644.75	3,959.25	2,644.75	3,959.25	
7-Jan-2019	2,209.75	6,169.00	2,209.75	6,169.00	
8-Jan-2019	2,955.00	9,124.00	2,955.00	9,124.00	
9-Jan-2019	2,103.50	11,227.50	2,103.50	11,227.50	
10-Jan-2019	2,171.00	13,398.50	2,171.00	13,398.50	
11-Jan-2019	1,514.50	14,913.00	1,514.50	14,913.00	
12-Jan-2019	1,131.75	16,044.75	1,131.75	16,044.75	
13-Jan-2019	1,137.00	17,181.75	1,137.00	17,181.75	
14-Jan-2019	1,191.00	18,372.75	1,191.00	18,372.75	
15-Jan-2019	586.50	18,959.25	586.50	18,959.25	
16-Jan-2019	1,487.25	20,446.50	1,487.25	20,446.50	
17-Jan-2019	486.25	20,932.75	486.25	20,932.75	
18-Jan-2019	838.50	21,771.25	838.50	21,771.25	
19-Jan-2019	15.75	21,787.00	15.75	21,787.00	
20-Jan-2019	74.75	21,861.75	74.75	21,861.75	
21-Jan-2019	460.75	22,322.50	460.75	22,322.50	
22-Jan-2019	24.75	22,347.25	24.75	22,347.25	
23-Jan-2019	28.00	22,375.25	28.00	22,375.25	
24-Jan-2019	10.50	22,385.75	10.50	22,385.75	
25-Jan-2019	31.00	22,416.75	31.00	22,416.75	
26-Jan-2019	396.50	22,813.25	396.50	22,813.25	
27-Jan-2019	129.00	22,942.25	129.00	22,942.25	
28-Jan-2019	46.50	22,988.75	46.50	22,988.75	
29-Jan-2019	31.00	23,019.75	31.00	23,019.75	
30-Jan-2019	69.75	23,089.50	69.75	23,089.50	
31-Jan-2019	67.50	23,157.00	67.50	23,157.00	

less Difference in Water Content:	1260.53
Less Out of Seam dilution:	0
Output (tons) measured by Belt	21,896.47
Tonnes mined in DARR	0
Net Output after removing DARR	21,896.47

Barapukuria Coal Mine Daywise Data Graph for January 2019



আসুন, যানবাহনসমূহকে অটোগ্যাসে রূপান্তর করি...

জাতীয় সম্পদ প্রাকৃতিক গ্যাস সাশ্রয় করি...

facebook

"Energy misused, cannot be excused"

আমাদের ঘরে যদি এখনো কয়েল স্টার্টার যুক্ত টিউবলাইট থেকে থাকে, আসুন আজই LED টিউবলাইট দ্বারা প্রতিস্থাপন করি।

HYDROCARBON UNIT ON FACEBOOK

“আসুন আমাদের জাতীয় সম্পদ প্রাকৃতিক গ্যাস সাশ্রয় করি”

১। **LPG** ব্যবহার করুন..

অবৈধ গ্যাস সংযোগ থেকে বিরত থাকুন

২। **CNG** নয়, অকটেন দিয়ে গাড়ি চালান...

গাড়ির ইঞ্জিনের আয়ুষ্কাল বাড়ান

চলুন আজই যানবাহনসমূহ AUTO GAS (LPG) এ রূপান্তর করি...

- * CNG এর তুলনায় LPG কনভারশনে ৫০% কম খরচ হয়
- * ৩-৫ মিনিটে ট্যাংকে ফুয়েল ভর্তি হয়, লম্বা লাইনে দাঁড়িয়ে অপেক্ষা করার প্রয়োজন পরে না
- * CNG এর তুলনায় সিলিন্ডারে জায়গা, ওজন ও প্রেশার কম দরকার
- * রক্ষণাবেক্ষণের খরচ কম
- * পেট্রলের তুলনায় AUTO GAS -এ খরচ প্রায় ৫০% কম
- * গ্যাসোলিন ও ডিজেলের তুলনায় নিঃসরণ কম

Hydrocarbon Unit

Energy & Mineral Resources Division
Ministry of Power, Energy & Mineral Resources
153, Pioneer Road
Segunbagicha, Dhaka-1000
www.hcuro.gov.bd